

SoftBase Batch HealthCare

SoftBase Systems, Inc.
softbase.com

SoftBase

Contacts

SoftBase Systems, Inc
1200 Ridgefield Blvd, Suite 290
Asheville, NC 28806

(828)670-9900

<http://www.softbase.com>

Support: support@softbase.com

Sales: sales@softbase.com

Mike Arnold
ma@softbase.com
(828)670-9900x396

About SoftBase

Gary Blair - 1987
Based in Asheville, NC

Focused on Customer Support

Top-rated Dun & Bradstreet™
small business low-risk rating

Customers



Batch Healthcare

- DeadLock Advisor
- Batch Analyzer
- Attach
- Checkpoint

DeadLock Advisor

- Immediately Interpreted
- Localized to Application
- Simplified Presentation

Batch Analyzer

- Focused on quick, easy navigation to problem areas
- Data available within a minute
- Extremely lightweight
- Typically left running 24x7
- No DB2 traces used
- No JCL changes
- Fast, easy installation

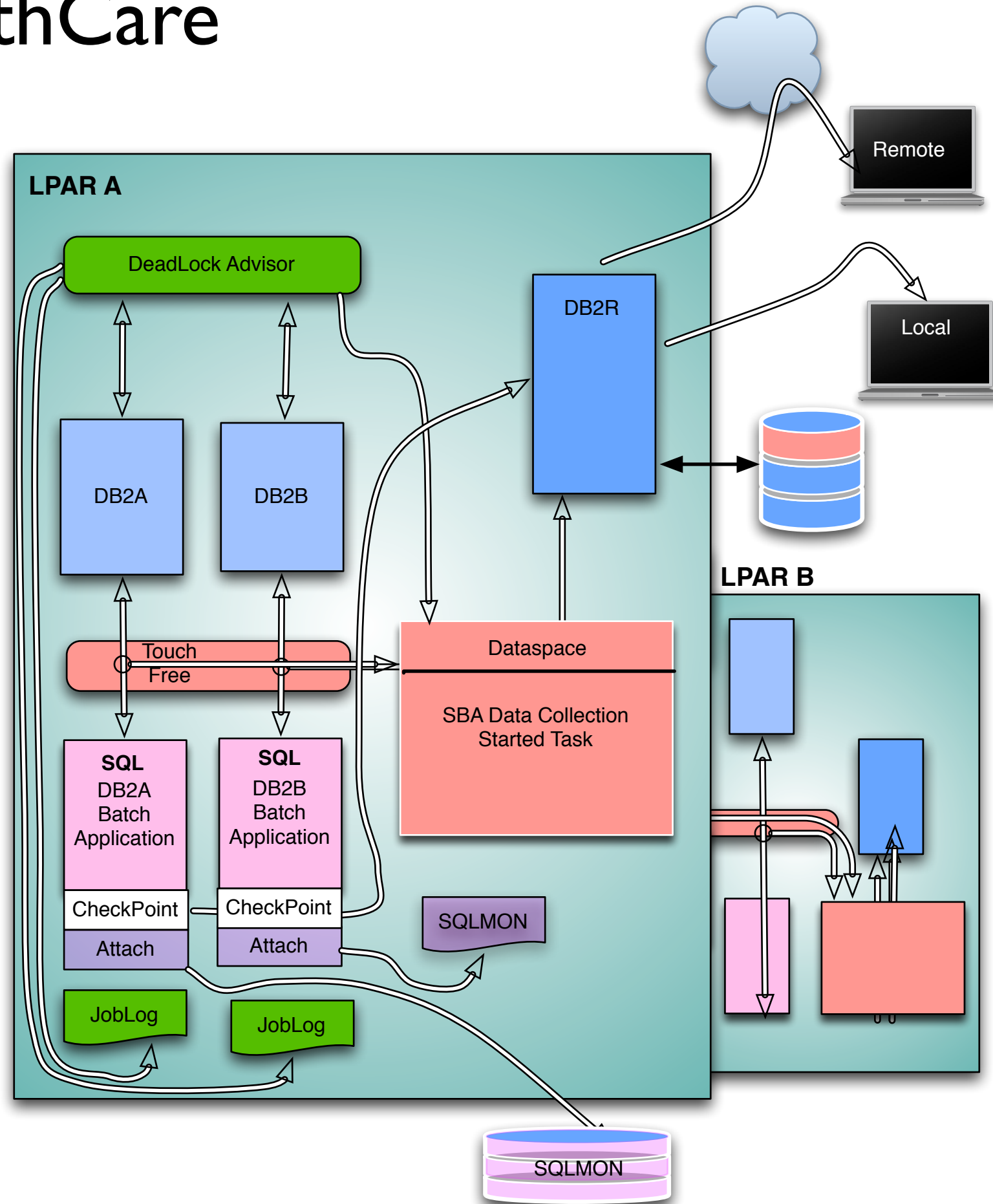
Attach

- Call Attach
- Auto-Commit
- Variable Commit Frequency
- ENQ Serialization
- SQL Monitoring

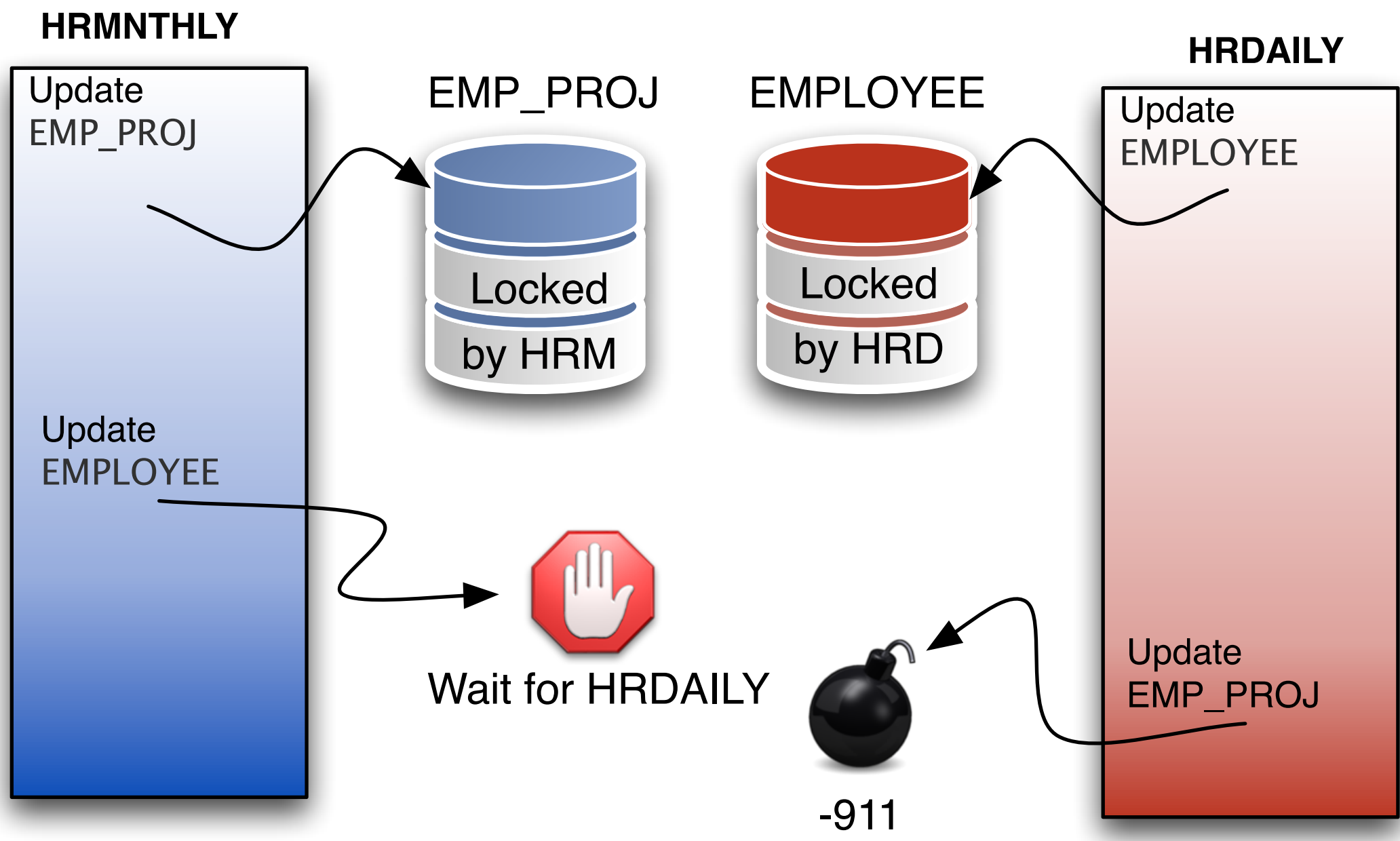
Checkpoint

- Provides Checkpoint/Restart services
- Automatically repositions sequential files & RRS resources on restart, restoring working storage
- Flexible precompiler can convert most COBOL & PL/I programs
- Support for existing Quickstart™, AR/CTL™ & AdvantageGen™ Applications

Batch HealthCare



Deadlock



DB2 MSTR

```
DSNT375I  -DB8G PLAN=HRDAILY WITH
CORRELATION-ID=HRDAILY
CONNECTION-ID=BATCH
LUW-ID=USASDV02.LINK8.C60928D8323F=129
THREAD-INFO=CSB4:*:*:*
IS DEADLOCKED WITH PLAN=HRMNTHLY WITH
CORRELATION-ID=HRMNTHLY
CONNECTION-ID=BATCH
LUW-ID=USASDV02.LINK8.C60928D27151=128
THREAD-INFO=CSB4:*:*:*
ON MEMBER DB8G
```

```
DSNT501I  -DB8G DSNILMCL RESOURCE UNAVAILABLE
CORRELATION-ID=HRDAILY
CONNECTION-ID=BATCH
LUW-ID=USASDV02.LINK8.C60928D8323F=129
REASON 00C90088
TYPE 00000302
NAME DGFDB008.DGFTS081.X'00007A'
```

Deadlock

HRDAILY

SBST375I SOFTBASE DeadLock Advisor

```
*****
* Job: HRDAILY. DB2 Subsystem DB8G. Plan HRDAILY is deadlocked by      *
* HRMNTHLY (BATCH). Deadlocking plan is HRMNTHLY.                      *
* This job (HRDAILY) will receive a negative SQLCODE.                  *
*****
```

SBST501I SOFTBASE DeadLock Advisor

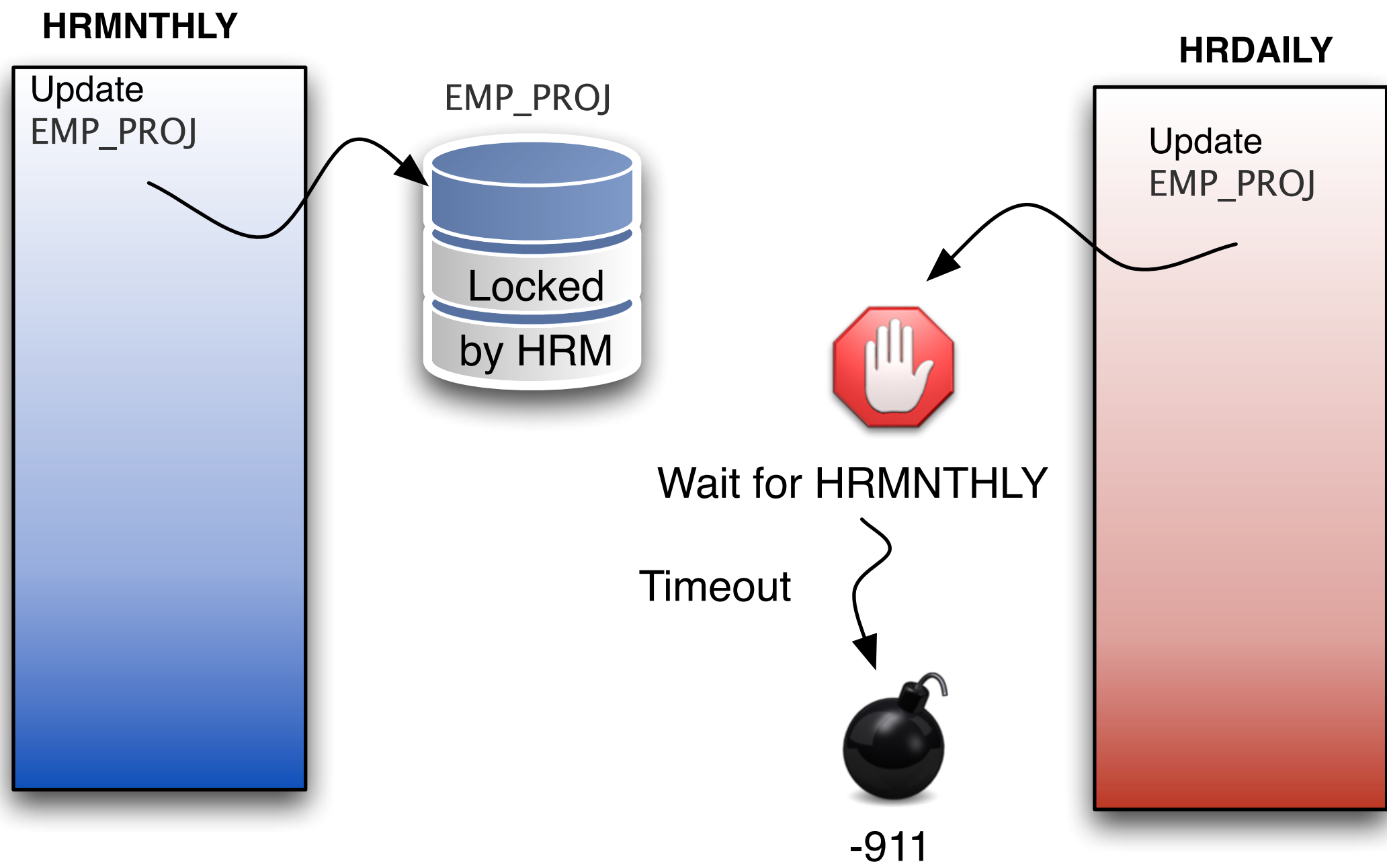
```
*****
* Job: HRDAILY. DB2 Subsystem DB8G. Tablespace Page                    *
* DGFDB008.DGFTS081.X'00007A' is involved in a deadlock condition.    *
*****
```

HRMNTHLY

SBST375I SOFTBASE DeadLock Advisor

```
*****  
* Job: HRMNTHLY. DB2 Subsystem DB8G. Plan HRMNTHLY has deadlocked *  
* plan HRDAILY in HRDAILY (BATCH). This job (HRMNTHLY) is *NOT* *  
* affected, but has caused HRDAILY to receive a deadlock condition. *  
*****
```

Timeout



DB2 MSTR

DSNT376I -DB8G PLAN=HRDAILY WITH
CORRELATION-ID=HRDAILY
CONNECTION-ID=BATCH
LUW-ID=USASDV02.LINK8.C60948488CC4=134
THREAD-INFO=CSB4:*:*:*
IS TIMED OUT. ONE HOLDER OF THE RESOURCE IS PLAN=HRMNTHLY

WITH

CORRELATION-ID=HRMNTHLY
CONNECTION-ID=BATCH
LUW-ID=USASDV02.LINK8.C609482050BF=133
THREAD-INFO=CSB4:*:*:*
ON MEMBER DB8G

DSNT501I -DB8G DSNILMCL RESOURCE UNAVAILABLE
CORRELATION-ID=HRDAILY
CONNECTION-ID=BATCH
LUW-ID=USASDV02.LINK8.C60948488CC4=134
REASON 00C9008E
TYPE 00000302
NAME DGFDB008.DGFTS081.X'00007A'

Timeout

HRDAILY

SBST376I SOFTBASE DeadLock Advisor

```
*****  
* Job: HRDAILY. DB2 Subsystem DB8G. Plan HRDAILY is timed out due to *  
* HRMNTHLY (BATCH). Requested resource is being held by plan *  
* HRMNTHLY. This job (HRDAILY) will receive a negative SQLCODE. *  
*****
```

SBST501I SOFTBASE DeadLock Advisor

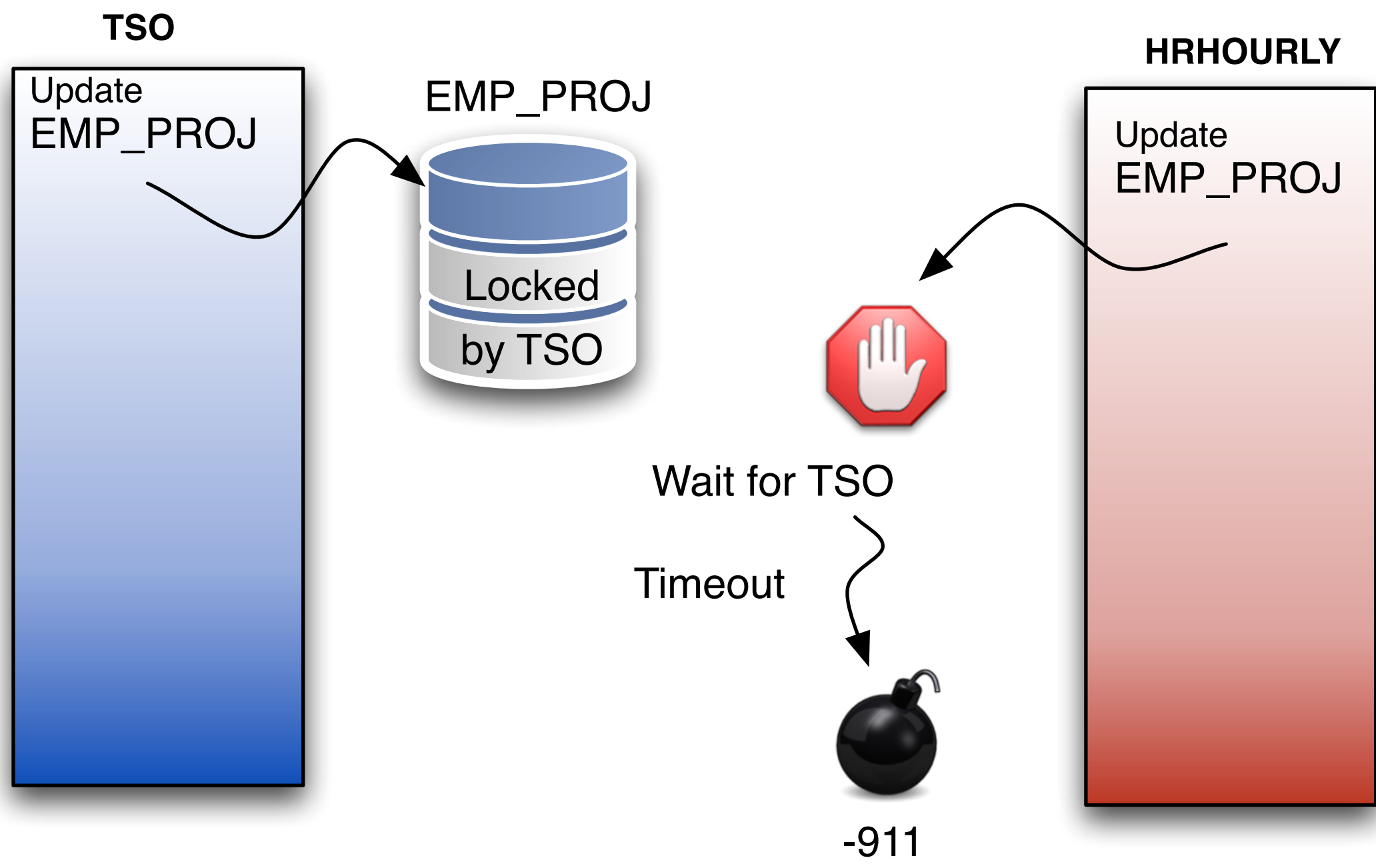
```
*****  
* Job: HRDAILY. DB2 Subsystem DB8G. A lock request for Tablespace *  
* Page DGFDB008.DGFTS081.X'00007A' could not be granted, and the *  
* request waited for a period longer than the maximum specified by *  
* the installation. *  
*****
```

HRMNTHLY

SBST376I SOFTBASE DeadLock Advisor

```
*****  
* Job: HRMNTHLY. DB2 Subsystem DB8G. Plan HRMNTHLY has timed out plan *  
* HRDAILY in HRDAILY (BATCH). This job (HRMNTHLY) is *NOT* affected, *  
* but has caused HRDAILY to receive a timeout condition. *  
*****
```

TSO Timeout



DB2 MSTR

```
DSNT376I  -DB8G PLAN=HRHOURLY WITH  
CORRELATION-ID=HRHOURLY  
CONNECTION-ID=BATCH  
LUW-ID=USASDV02.LINK8.C60964E6D73E=150  
THREAD-INFO=CSB4:*:*:*  
IS TIMED OUT. ONE HOLDER OF THE RESOURCE IS PLAN=DSNESPRR
```

WITH

```
CORRELATION-ID=CSB4  
CONNECTION-ID=TSO  
LUW-ID=USASDV02.LINK8.C609647A0E77=145  
THREAD-INFO=CSB4:*:*:*  
ON MEMBER DB8G
```

```
DSNT501I  -DB8G DSNILMCL RESOURCE UNAVAILABLE  
CORRELATION-ID=HRHOURLY  
CONNECTION-ID=BATCH  
LUW-ID=USASDV02.LINK8.C60964E6D73E=150  
REASON 00C9008E  
TYPE 00000D01  
NAME 00000279.00000010
```

TSO Timeout

HRHOURLY

SBST376I SOFTBASE DeadLock Advisor

```
*****  
* Job: HRHOURLY. DB2 Subsystem DB8G. Plan HRHOURLY is timed out due *  
* to CSB4 (TSO). Requested resource is being held by plan DSNESPRR. *  
* This job (HRHOURLY) will receive a negative SQLCODE. *  
*****
```

SBST501I SOFTBASE DeadLock Advisor

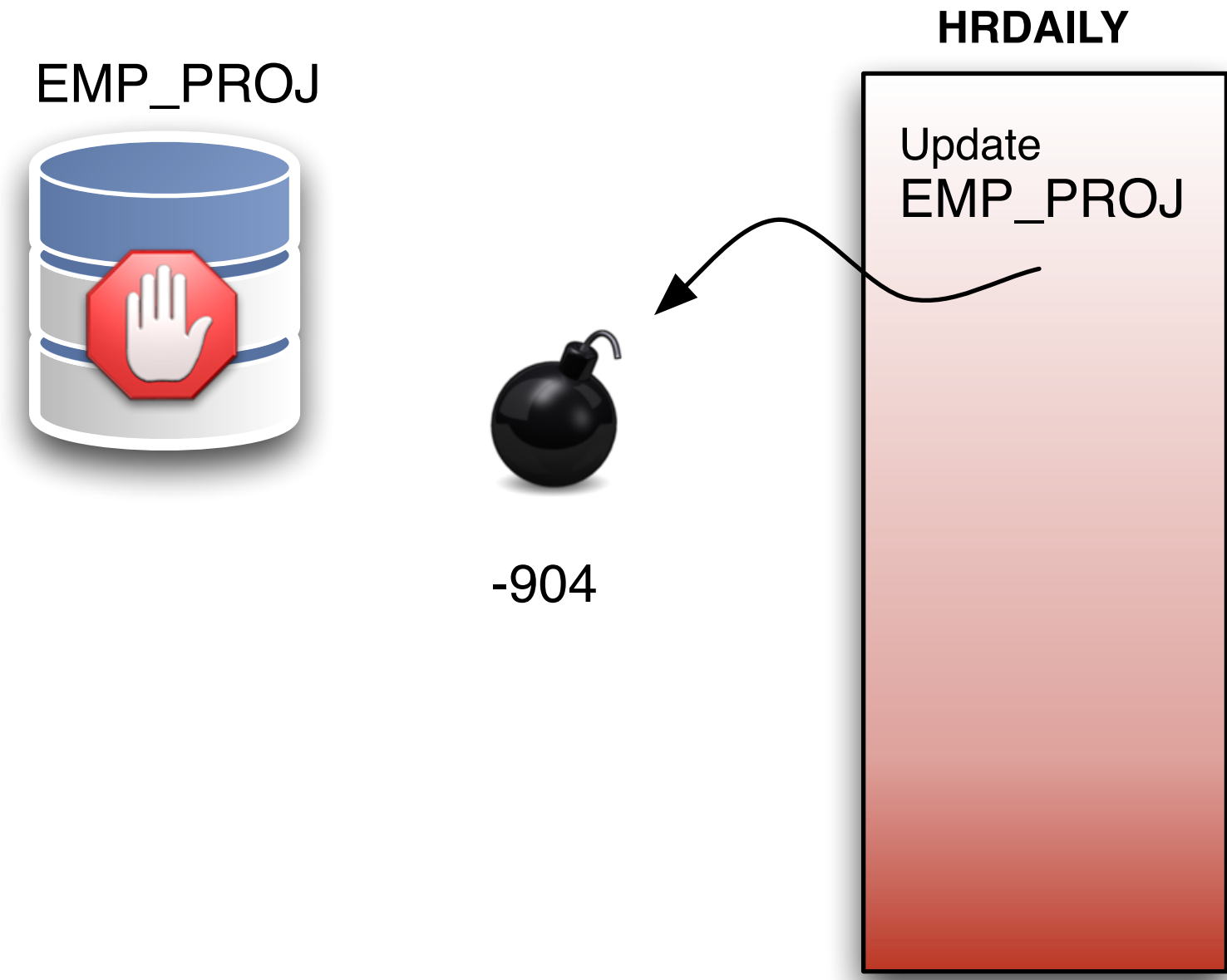
```
*****  
* Job: HRHOURLY. DB2 Subsystem DB8G. A lock request for DBID/OBID *  
* 00000279.00000010 could not be granted, and the request waited for *  
* a period longer than the maximum specified by the installation. *  
*****
```

CSB4

SBST376I SOFTBASE DeadLock Advisor

```
*****  
* Job: CSB4. DB2 Subsystem DB8G. Plan DSNEPRR has timed out plan      *  
* HRHOURLY in HRHOURLY (BATCH). This job (CSB4) is *NOT* affected,  *  
* but has caused HRHOURLY to receive a timeout condition.          *  
*****
```

Stopped Database



DB2 MSTR

```
DSNT501I  -DB8G DSNIDBET RESOURCE UNAVAILABLE  
CORRELATION-ID=HRDAILY  
CONNECTION-ID=BATCH  
LUW-ID=USASDV02.LINK8.C60A66FCBD80=305  
REASON 00C90081  
TYPE 00000100  
NAME DGFDB008
```


HRDAILY

SBST501I SOFTBASE DeadLock Advisor

```
*****  
* Job: HRDAILY. DB2 Subsystem DB8G. An attempt was made to allocate *  
* Database DGFDB008, but it is stopped for all access. *  
* This job (HRDAILY) will receive a negative SQLCODE. *  
*****
```

Batch Analyzer view of jobs

SoftBase Systems Batch Analyzer Version 3.1.0

=== **SQL Performance Analysis (Jobs)** ===

Command ==> █ Scroll ==> CSR

Filter: ON Intervals: OFF From: 08/30/09 To: 08/31/09 Loctn: DB8G

->

Jobname	Job Start		+--- RUN TIME ---+		+--- CPU UTILIZED ---+		DB2 CPU%	Total
	Timestamp	Job Elapsed	DB2 % of Et	Job CPU	DB2 % of CPU	DB2 CPU%		
DBP1001D	08/30 21:34	00:17:32	89.1	00:08:59	82.8	98.0	\$ 446.77	
HRP4001W	08/30 21:34	00:32:15	2.7	00:01:06	7.6	1.1	\$ 5.10	
DBP1002W	08/30 21:34	00:17:26	39.4	00:00:14	16.5	0.5	\$ 2.42	
SBASTPRG	08/31 01:01	00:00:01	28.3	~ 0:00	37.5	0.0	\$ 0.01	
CSBJA	08/31 09:25	00:00:07	12.1	~ 0:00	3.7	0.0	\$ 0.01	
CSBJA	08/31 09:25	~ 0:00	3.5	~ 0:00	12.5	0.0	\$ 0.01	
CSBIA	08/31 13:18	00:00:09	5.5	~ 0:00	4.6	0.0	\$ 0.01	
CSBIA	08/31 13:19	00:00:03	1.9	~ 0:00	11.0	0.0	\$ 0.01	
CSBIA	08/31 13:20	00:00:02	0.4	~ 0:00	2.0	0.0	\$ 0.01	
CSBIA	08/31 13:20	00:00:01	0.5	~ 0:00	5.3	0.0	\$ 0.01	
CSBIA	08/31 13:35	00:00:27	0.0	~ 0:00	1.9	0.0	\$ 0.01	
CSBIA	08/31 13:35	00:00:01	0.4	~ 0:00	5.3	0.0	\$ 0.01	
CSBJX	08/31 13:42	00:00:14	0.3	00:00:06	0.1	0.0	\$ 0.01	
CSBJA	08/31 13:56	00:00:11	0.3	~ 0:00	0.8	0.0	\$ 0.01	
CSBJA	08/31 13:56	~ 0:00	1.0	~ 0:00	6.5	0.0	\$ 0.01	

Batch Analyzer view of jobs

Immediately identify the jobs using the most DB2 time

SoftBase Systems Batch Analyzer Version 3.1.0
 === SQL Performance Analysis (Jobs) ===
 Command ==> █ Scroll ==> CSR
 Filter: ON Intervals: OFF From: 08/30/09 To: 08/31/09 Locn: DB8G

Jobname	Job Start		+--- RUN TIME ---+		+--- CPU UTILIZED ---+		I	DB2 CPU%	Total DB2 Cost
	Timestamp		Job Elapsed	DB2 % of Et	Job CPU	DB2 % of CPU			
DBP1001D	08/30 21:34		00:17:32	89.1	00:08:59	82.8	--	98.0	\$ 446.77
HRP4001W	08/30 21:34		00:32:15	2.7	00:01:06	7.6	--	1.1	\$ 5.10
DBP1002W	08/30 21:34		00:17:26	39.4	00:00:14	16.5	--	0.5	\$ 2.42
SBASTPRG	08/31 01:01		00:00:01	28.3	~ 0:00	37.5	--	0.0	\$ 0.01
CSBJA	08/31 09:25		00:00:07	12.1	~ 0:00	3.7	--	0.0	\$ 0.01
CSBJA	08/31 09:25		~ 0:00	3.5	~ 0:00	12.5	--	0.0	\$ 0.01
CSBIA	08/31 13:18		00:00:09	5.5	~ 0:00	4.6	--	0.0	\$ 0.01
CSBIA	08/31 13:19		00:00:03	1.9	~ 0:00	11.0	--	0.0	\$ 0.01
CSBIA	08/31 13:20		00:00:02	0.4	~ 0:00	2.0	--	0.0	\$ 0.01
CSBIA	08/31 13:20		00:00:01	0.5	~ 0:00	5.3	--	0.0	\$ 0.01
CSBIA	08/31 13:35		00:00:27	0.0	~ 0:00	1.9	--	0.0	\$ 0.01
CSBIA	08/31 13:35		00:00:01	0.4	~ 0:00	5.3	--	0.0	\$ 0.01
CSBJX	08/31 13:42		00:00:14	0.3	00:00:06	0.1	--	0.0	\$ 0.01
CSBJA	08/31 13:56		00:00:11	0.3	~ 0:00	0.8	--	0.0	\$ 0.01
CSBJA	08/31 13:56		~ 0:00	1.0	~ 0:00	6.5	--	0.0	\$ 0.01

Batch Analyzer view of jobs

DBP1001D used 98% of all DB2 cpu in 8/30 batch window

SoftBase Systems Batch Analyzer Version 3.1.0
 === SQL Performance Analysis (Jobs) ===
 Command ==> █ Scroll ==> CSR
 Filter: ON Intervals: OFF From: 08/30/09 To: 08/31/09 Loctn: DB8G

Jobname	Job Start		RUN TIME		CPU UTILIZED		I	DB2 CPU% all Jobs	Total DB2 Cost
	Timestamp	Elapsed	Job	DB2 %	Job	DB2 %			
DBP1001D	08/30 21:34	00:17:32	89.1	00:08:59	82.8	--	98.0	\$ 446.77	
HRP4001W	08/30 21:34	00:32:15	2.7	00:01:06	7.6	--	1.1	\$ 5.10	
DBP1002W	08/30 21:34	00:17:26	39.4	00:00:14	16.5	--	0.5	\$ 2.42	
SBASTPRG	08/31 01:01	00:00:01	28.3	~ 0:00	37.5	--	0.0	\$ 0.01	
CSBJA	08/31 09:25	00:00:07	12.1	~ 0:00	3.7	--	0.0	\$ 0.01	
CSBJA	08/31 09:25	~ 0:00	3.5	~ 0:00	12.5	--	0.0	\$ 0.01	
CSBIA	08/31 13:18	00:00:09	5.5	~ 0:00	4.6	--	0.0	\$ 0.01	
CSBIA	08/31 13:19	00:00:03	1.9	~ 0:00	11.0	--	0.0	\$ 0.01	
CSBIA	08/31 13:20	00:00:02	0.4	~ 0:00	2.0	--	0.0	\$ 0.01	
CSBIA	08/31 13:20	00:00:01	0.5	~ 0:00	5.3	--	0.0	\$ 0.01	
CSBIA	08/31 13:35	00:00:27	0.0	~ 0:00	1.9	--	0.0	\$ 0.01	
CSBIA	08/31 13:35	00:00:01	0.4	~ 0:00	5.3	--	0.0	\$ 0.01	
CSBJX	08/31 13:42	00:00:14	0.3	00:00:06	0.1	--	0.0	\$ 0.01	
CSBJA	08/31 13:56	00:00:11	0.3	~ 0:00	0.8	--	0.0	\$ 0.01	
CSBJA	08/31 13:56	~ 0:00	1.0	~ 0:00	6.5	--	0.0	\$ 0.01	

Batch Analyzer view of jobs

SoftBase Systems Batch Analyzer Version 3.1.0
 === SQL Performance Analysis (Jobs) ===
 Command ==> █ Scroll ==> CSR
 Filter: ON Intervals: OFF From: 08/30/09 To: 08/31/09 Locn: DB8G
 ->

Jobname	Job Start		+--- RUN TIME ---+		+--- CPU UTILIZED ---+		DB2 CPU%	Total DB2 Cost
	Timestamp	Job Elapsed	DB2 % of Et	Job CPU	DB2 % of CPU			
_ DBP1001D	08/30 21:34	00:17:32	89.1	00:08:59	82.8	--	98.0 \$ 446.77	
_ HRP4001W	08/30 21:34	00:32:15	2.7	00:01:06	7.6	--	1.1 \$ 5.10	
_ DBP1002W	08/30 21:34	00:17:26	39.4	00:00:14	16.5	--	0.5 \$ 2.42	
_ SBASTPRG	08/31 01:01	00:00:01	28.3	~ 0:00	37.5	--	0.0 \$ 0.01	
_ CSBJA	08/31 09:25	00:00:07	12.1	~ 0:00	3.7	--	0.0 \$ 0.01	
_ CSBJA	08/31 09:25	~ 0:00	3.5	~ 0:00	12.5	--	0.0 \$ 0.01	
_ CSBIA	08/31 13:18	00:00:09	5.5	~ 0:00	4.6	--	0.0 \$ 0.01	
_ CSBIA	08/31 13:19	00:00:03	1.9	~ 0:00	11.0	--	0.0 \$ 0.01	
_ CSBIA	08/31 13:20	00:00:02	0.4	~ 0:00	2.0	--	0.0 \$ 0.01	
_ CSBIA	08/31 13:20	00:00:01	0.5	~ 0:00	5.3	--	0.0 \$ 0.01	
_ CSBIA	08/31 13:35	00:00:27	0.0	~ 0:00	1.9	--	0.0 \$ 0.01	
_ CSBIA	08/31 13:35	00:00:01	0.4	~ 0:00	5.3	--	0.0 \$ 0.01	
_ CSBJX	08/31 13:42	00:00:14	0.3	00:00:06	0.1	--	0.0 \$ 0.01	
_ CSBJA	08/31 13:56	00:00:11	0.3	~ 0:00	0.8	--	0.0 \$ 0.01	
_ CSBJA	08/31 13:56	~ 0:00	1.0	~ 0:00	6.5	--	0.0 \$ 0.01	

Batch Analyzer view of jobs

SoftBase Systems Batch Analyzer Version 3.1.0

=== **SQL Performance Analysis (Jobs)** ===

Command ==> █ Scroll ==> CSR

Filter: ON Intervals: OFF From: 08/30/09 To: 08/31/09 Locn: DB8G

→

		+--- RUN TIME ---+			+--- CPU UTILIZED ---+				
Jobname	Job Start Timestamp	Job Elapsed	DB2 % of Et	Job CPU	DB2 % of CPU	I	DB2 CPU% all Jobs	Total DB2 Cost	
DBP1001D	08/30 21:34	00:17:32	89.1	00:08:59	82.8	--	98.0	\$ 446.77	
HRP4001W	08/30 21:34	00:32:15	2.7	00:01:06	7.6	--	1.1	\$ 5.10	
DBP1002W	08/30 21:34	00:17:26	39.4	00:00:14	16.5	--	0.5	\$ 2.42	
SBASTPRG	08/31 01:01	00:00:01	28.3	~ 0:00	37.5	--	0.0	\$ 0.01	
CSBJA	08/31 09:25	00:00:07	12.1	~ 0:00	3.7	--	0.0	\$ 0.01	
CSBJA	08/31 09:25	~ 0:00	3.5	~ 0:00	12.5	--	0.0	\$ 0.01	
CSBIA	08/31 13:18	00:00:09	5.5	~ 0:00	4.6	--	0.0	\$ 0.01	
CSBIA	08/31 13:19	00:00:03	1.9	~ 0:00	11.0	--	0.0	\$ 0.01	
CSBIA	08/31 13:20	00:00:02	0.4	~ 0:00	2.0	--	0.0	\$ 0.01	
CSBIA	08/31 13:20	00:00:01	0.5	~ 0:00	5.3	--	0.0	\$ 0.01	
CSBIA	08/31 13:35	00:00:27	0.0	~ 0:00	1.9	--	0.0	\$ 0.01	
CSBIA	08/31 13:35	00:00:01	0.4	~ 0:00	5.3	--	0.0	\$ 0.01	
CSBJX	08/31 13:42	00:00:14	0.3	00:00:06	0.1	--	0.0	\$ 0.01	
CSBJA	08/31 13:56	00:00:11	0.3	~ 0:00	0.8	--	0.0	\$ 0.01	
CSBJA	08/31 13:56	~ 0:00	1.0	~ 0:00	6.5	--	0.0	\$ 0.01	

Batch Analyzer view of jobs

SoftBase Systems Batch Analyzer Version 3.1.0

=== **SQL Performance Analysis (Jobs)** ===

Command ==> █ Scroll ==> CSR

Filter: ON Intervals: OFF From: 08/30/09 To: 08/31/09 Loctn: DB8G

->

Jobname	Job Start		RUN TIME		CPU UTILIZED		I	all Jobs	Total DB2 Cost
	Timestamp	Elapsed	Job Elapsed	DB2 % of Et	Job CPU	DB2 % of CPU			
DBP1001D	08/30 21:34	00:17:32	00:17:32	89.1	00:08:59	82.8	--	98.0	\$ 446.77
HRP4001W	08/30 21:34	00:32:15	00:32:15	2.7	00:01:06	7.6	--	1.1	\$ 5.10
DBP1002W	08/30 21:34	00:17:26	00:17:26	39.4	00:00:14	16.5	--	0.5	\$ 2.42
SBASTPRG	08/31 01:01	00:00:01	00:00:01	28.3	~ 0:00	37.5	--	0.0	\$ 0.01
CSBJA	08/31 09:25	00:00:07	00:00:07	12.1	~ 0:00	3.7	--	0.0	\$ 0.01
CSBJA	08/31 09:25	~ 0:00	~ 0:00	3.5	~ 0:00	12.5	--	0.0	\$ 0.01
CSBIA	08/31 13:18	00:00:09	00:00:09	5.5	~ 0:00	4.6	--	0.0	\$ 0.01
CSBIA	08/31 13:19	00:00:03	00:00:03	1.9	~ 0:00	11.0	--	0.0	\$ 0.01
CSBIA	08/31 13:20	00:00:02	00:00:02	0.4	~ 0:00	2.0	--	0.0	\$ 0.01
CSBIA	08/31 13:20	00:00:01	00:00:01	0.5	~ 0:00	5.3	--	0.0	\$ 0.01
CSBIA	08/31 13:35	00:00:27	00:00:27	0.0	~ 0:00	1.9	--	0.0	\$ 0.01
CSBIA	08/31 13:35	00:00:01	00:00:01	0.4	~ 0:00	5.3	--	0.0	\$ 0.01
CSBJX	08/31 13:42	00:00:14	00:00:14	0.3	00:00:06	0.1	--	0.0	\$ 0.01
CSBJA	08/31 13:56	00:00:11	00:00:11	0.3	~ 0:00	0.8	--	0.0	\$ 0.01
CSBJA	08/31 13:56	~ 0:00	~ 0:00	1.0	~ 0:00	6.5	--	0.0	\$ 0.01

Batch Analyzer view of jobs

You also know which jobs you can likely ignore.

SoftBase Systems Batch Analyzer Version 3.1.0
 === SQL Performance Analysis (Jobs) ===
 Command ==> █ Scroll ==> CSR
 Filter: ON Intervals: OFF From: 08/30/09 To: 08/31/09 Loctn: DB8G

Jobname	Job Start		Job Elapsed		DB2 %	CPU UTILIZED		DB2 CPU%	Total DB2 Cost
	Timestamp			of Et	Job CPU	DB2 % of CPU			
DBP1001D	08/30 21:34	00:17:32	89.1	00:08:59	82.8	98.0	\$ 446.77		
HRP4001W	08/30 21:34	00:32:15	2.7	00:01:06	7.6	1.1	\$ 5.10		
DBP1002W	08/30 21:34	00:17:26	39.4	00:00:14	16.5	0.5	\$ 2.42		
SBASTPRG	08/31 01:01	00:00:01	28.3	~ 0:00	37.5	0.0	\$ 0.01		
CSBJA	08/31 09:25	00:00:07	12.1	~ 0:00	3.7	0.0	\$ 0.01		
CSBJA	08/31 09:25	~ 0:00	3.5	~ 0:00	12.5	0.0	\$ 0.01		
CSBIA	08/31 13:18	00:00:09	5.5	~ 0:00	4.6	0.0	\$ 0.01		
CSBIA	08/31 13:19	00:00:03	1.9	~ 0:00	11.0	0.0	\$ 0.01		
CSBIA	08/31 13:20	00:00:02	0.4	~ 0:00	2.0	0.0	\$ 0.01		
CSBIA	08/31 13:20	00:00:01	0.5	~ 0:00	5.3	0.0	\$ 0.01		
CSBIA	08/31 13:35	00:00:27	0.0	~ 0:00	1.9	0.0	\$ 0.01		
CSBIA	08/31 13:35	00:00:01	0.4	~ 0:00	5.3	0.0	\$ 0.01		
CSBJX	08/31 13:42	00:00:14	0.3	00:00:06	0.1	0.0	\$ 0.01		
CSBJA	08/31 13:56	00:00:11	0.3	~ 0:00	0.8	0.0	\$ 0.01		
CSBJA	08/31 13:56	~ 0:00	1.0	~ 0:00	6.5	0.0	\$ 0.01		

Batch Analyzer view of jobs

SoftBase Systems Batch Analyzer Version 3.1.0

=== **SQL Performance Analysis (Jobs)** ===

Command ==> █ Scroll ==> CSR

Filter: ON Intervals: OFF From: 08/30/09 To: 08/31/09 Loctn: DB8G

->

Jobname	Job Start		RUN TIME		CPU UTILIZED		DB2 CPU%	Total DB2 Cost
	Timestamp	Job Elapsed	DB2 % of Et	Job CPU	DB2 % of CPU			
DBP1001D	08/30 21:34	00:17:32	89.1	00:08:59	82.8	98.0	\$ 446.77	
HRP4001W	08/30 21:34	00:32:15	2.7	00:01:06	7.6	1.1	\$ 5.10	
DBP1002W	08/30 21:34	00:17:26	39.4	00:00:14	16.5	0.5	\$ 2.42	
SBASTPRG	08/31 01:01	00:00:01	28.3	~ 0:00	37.5	0.0	\$ 0.01	
CSBJA	08/31 09:25	00:00:07	12.1	~ 0:00	3.7	0.0	\$ 0.01	
CSBJA	08/31 09:25	~ 0:00	3.5	~ 0:00	12.5	0.0	\$ 0.01	
CSBIA	08/31 13:18	00:00:09	5.5	~ 0:00	4.6	0.0	\$ 0.01	
CSBIA	08/31 13:19	00:00:03	1.9	~ 0:00	11.0	0.0	\$ 0.01	
CSBIA	08/31 13:20	00:00:02	0.4	~ 0:00	2.0	0.0	\$ 0.01	
CSBIA	08/31 13:20	00:00:01	0.5	~ 0:00	5.3	0.0	\$ 0.01	
CSBIA	08/31 13:35	00:00:27	0.0	~ 0:00	1.9	0.0	\$ 0.01	
CSBIA	08/31 13:35	00:00:01	0.4	~ 0:00	5.3	0.0	\$ 0.01	
CSBJX	08/31 13:42	00:00:14	0.3	00:00:06	0.1	0.0	\$ 0.01	
CSBJA	08/31 13:56	00:00:11	0.3	~ 0:00	0.8	0.0	\$ 0.01	
CSBJA	08/31 13:56	~ 0:00	1.0	~ 0:00	6.5	0.0	\$ 0.01	

Batch Analyzer view of jobs

SoftBase Systems Batch Analyzer Version 3.1.0

=== **SQL Performance Analysis (Jobs)** ===

Command ==> █ Scroll ==> CSR

Filter: ON Intervals: OFF From: 08/30/09 To: 08/31/09 Locn: DB8G

->

Jobname	Job Start		RUN TIME		CPU UTILIZED		DB2 CPU%	Total DB2 Cost
	Timestamp	Elapsed	DB2 % of Et	Job CPU	DB2 % of CPU			
DBP1001D	08/30 21:34	00:17:32	89.1	00:08:59	82.8	98.0	\$ 446.77	
HRP4001W	08/30 21:34	00:32:15	2.7	00:01:06	7.6	1.1	\$ 5.10	
DBP1002W	08/30 21:34	00:17:26	39.4	00:00:14	16.5	0.5	\$ 2.42	
SBASTPRG	08/31 01:01	00:00:01	28.3	~ 0:00	37.5	0.0	\$ 0.01	
CSBJA	08/31 09:25	00:00:07	12.1	~ 0:00	3.7	0.0	\$ 0.01	
CSBJA	08/31 09:25	~ 0:00	3.5	~ 0:00	12.5	0.0	\$ 0.01	
CSBIA	08/31 13:18	00:00:09	5.5	~ 0:00	4.6	0.0	\$ 0.01	
CSBIA	08/31 13:19	00:00:03	1.9	~ 0:00	11.0	0.0	\$ 0.01	
CSBIA	08/31 13:20	00:00:02	0.4	~ 0:00	2.0	0.0	\$ 0.01	
CSBIA	08/31 13:20	00:00:01	0.5	~ 0:00	5.3	0.0	\$ 0.01	
CSBIA	08/31 13:35	00:00:27	0.0	~ 0:00	1.9	0.0	\$ 0.01	
CSBIA	08/31 13:35	00:00:01	0.4	~ 0:00	5.3	0.0	\$ 0.01	
CSBJX	08/31 13:42	00:00:14	0.3	00:00:06	0.1	0.0	\$ 0.01	
CSBJA	08/31 13:56	00:00:11	0.3	~ 0:00	0.8	0.0	\$ 0.01	
CSBJA	08/31 13:56	~ 0:00	1.0	~ 0:00	6.5	0.0	\$ 0.01	

Batch Analyzer view of jobs

SoftBase Systems Batch Analyzer Version 3.1.0

=== **SQL Performance Analysis (Jobs)** ===

Command ==> █ Scroll ==> CSR

Filter: ON Intervals: OFF From: 08/30/09 To: 08/31/09 Locn: DB8G

Jobname	Job Start		+--- RUN TIME ---+		+--- CPU UTILIZED ---+		I	DB2 CPU%	Total
	Timestamp	Job Elapsed	DB2 % of Et	Job CPU	DB2 % of CPU	all Jobs			
_ DBP1001D	08/30 21:34	00:17:32	89.1	00:08:59	82.8	--	98.0	\$ 446.77	
_ HRP4001W	08/30 21:34	00:32:15	2.7	00:01:06	7.6	--	1.1	\$ 5.10	
_ DBP1002W	08/30 21:34	00:17:26	39.4	00:00:14	16.5	--	0.5	\$ 2.42	
_ SBASTPRG	08/31 01:01	00:00:01	28.3	~ 0:00	37.5	--	0.0	\$ 0.01	
_ CSBJA	08/31 09:25	00:00:07	12.1	~ 0:00	3.7	--	0.0	\$ 0.01	
_ CSBJA	08/31 09:25	~ 0:00	3.5	~ 0:00	12.5	--	0.0	\$ 0.01	
_ CSBIA	08/31 13:18	00:00:09	5.5	~ 0:00	4.6	--	0.0	\$ 0.01	
_ CSBIA	08/31 13:19	00:00:03	1.9	~ 0:00	11.0	--	0.0	\$ 0.01	
_ CSBIA	08/31 13:20	00:00:02	0.4	~ 0:00	2.0	--	0.0	\$ 0.01	
_ CSBIA	08/31 13:20	00:00:01	0.5	~ 0:00	5.3	--	0.0	\$ 0.01	
_ CSBIA	08/31 13:35	00:00:27	0.0	~ 0:00	1.9	--	0.0	\$ 0.01	
_ CSBIA	08/31 13:35	00:00:01	0.4	~ 0:00	5.3	--	0.0	\$ 0.01	
_ CSBJX	08/31 13:42	00:00:14	0.3	00:00:06	0.1	--	0.0	\$ 0.01	
_ CSBJA	08/31 13:56	00:00:11	0.3	~ 0:00	0.8	--	0.0	\$ 0.01	
_ CSBJA	08/31 13:56	~ 0:00	1.0	~ 0:00	6.5	--	0.0	\$ 0.01	

Batch Analyzer view of jobs

Summarize data across any timeframe

SoftBase Systems Batch Analyzer Version 3.1.0

=== SQL Performance Analysis (Jobs) ===

Command ==> █ Scroll ==> CSR

Filter: ON Intervals: OFF From: 08/30/09 To: 08/31/09 Locn: DB8G

+-+ RUN TIME +-+ CPU UTILIZED +-+

Jobname	Job Start Timestamp	Job Elapsed	DB2 % of Et	Job CPU	DB2 % of CPU	I	DB2 CPU% all Jobs	Total DB2 Cost
DBP1001D	08/30 21:34	00:17:32	89.1	00:08:59	82.8	--	98.0	\$ 446.77
HRP4001W	08/30 21:34	00:32:15	2.7	00:01:06	7.6	--	1.1	\$ 5.10
DBP1002W	08/30 21:34	00:17:26	39.4	00:00:14	16.5	--	0.5	\$ 2.42
SBASTPRG	08/31 01:01	00:00:01	28.3	~ 0:00	37.5	--	0.0	\$ 0.01
CSBJA	08/31 09:25	00:00:07	12.1	~ 0:00	3.7	--	0.0	\$ 0.01
CSBJA	08/31 09:25	~ 0:00	3.5	~ 0:00	12.5	--	0.0	\$ 0.01
CSBIA	08/31 13:18	00:00:09	5.5	~ 0:00	4.6	--	0.0	\$ 0.01
CSBIA	08/31 13:19	00:00:03	1.9	~ 0:00	11.0	--	0.0	\$ 0.01
CSBIA	08/31 13:20	00:00:02	0.4	~ 0:00	2.0	--	0.0	\$ 0.01
CSBIA	08/31 13:20	00:00:01	0.5	~ 0:00	5.3	--	0.0	\$ 0.01
CSBIA	08/31 13:35	00:00:27	0.0	~ 0:00	1.9	--	0.0	\$ 0.01
CSBIA	08/31 13:35	00:00:01	0.4	~ 0:00	5.3	--	0.0	\$ 0.01
CSBJX	08/31 13:42	00:00:14	0.3	00:00:06	0.1	--	0.0	\$ 0.01
CSBJA	08/31 13:56	00:00:11	0.3	~ 0:00	0.8	--	0.0	\$ 0.01
CSBJA	08/31 13:56	~ 0:00	1.0	~ 0:00	6.5	--	0.0	\$ 0.01

Batch Analyzer view of jobs

Summarize data across any timeframe

SoftBase Systems Batch Analyzer Version 3.1.0

=== SQL Performance Analysis (Jobs) ===

Command ==> █ Scroll ==> CSR

Filter: ON Intervals: OFF From: 08/01/09 To: 08/31/09 Loctn: DB8G

Jobname	Job Start Timestamp	Job Elapsed	DB2 % of Et	CPU UTILIZED Job CPU	DB2 % of CPU	I	DB2 CPU% all Jobs	Total DB2 Cost
DBP1001D	08/24 20:34	00:24:00	90.6	00:09:19	81.3	--	47.5	\$ 455.10
DBP1001D	08/30 21:34	00:17:32	89.1	00:08:59	82.8	--	46.7	\$ 446.77
HRP4001W	08/24 20:34	00:32:51	3.7	00:01:14	8.3	--	0.6	\$ 6.26
HRP4001W	08/30 21:34	00:32:15	2.7	00:01:06	7.6	--	0.5	\$ 5.10
DBP1002W	08/24 20:34	00:17:43	40.7	00:00:17	17.5	--	0.3	\$ 2.99
CSBJSSA	08/26 10:48	00:05:45	2.2	00:00:18	12.9	--	0.2	\$ 2.36
DBP1002W	08/30 21:34	00:17:26	39.4	00:00:14	16.5	--	0.2	\$ 2.42
CSBJSSA	08/26 09:46	00:00:13	66.2	00:00:03	55.3	--	0.1	\$ 1.74
CSBJI	08/27 14:27	00:04:06	98.9	00:00:01	87.5	--	0.1	\$ 1.03
CSBJA	08/02 17:21	00:00:05	0.2	~ 0:00	2.2	--	0.0	\$ 0.01
CSBJA	08/02 17:21	~ 0:00	0.6	~ 0:00	4.0	--	0.0	\$ 0.01
CSBJX	08/02 17:52	00:00:03	55.8	~ 0:00	13.0	--	0.0	\$ 0.01
CSBJA	08/02 17:55	00:00:02	14.3	~ 0:00	3.6	--	0.0	\$ 0.01
CSBJA	08/02 17:55	~ 0:00	0.9	~ 0:00	6.5	--	0.0	\$ 0.01
CSBJX	08/02 17:57	00:00:01	1.4	~ 0:00	4.5	--	0.0	\$ 0.01

Batch Analyzer view of jobs

SoftBase Systems Batch Analyzer Version 3.1.0

=== **SQL Performance Analysis (Jobs)** ===

Command ==> █ Scroll ==> CSR

Filter: ON Intervals: OFF From: 08/30/09 To: 08/31/09 Loctn: DB8G

->

Jobname	Job Start		+--- RUN TIME ---+		+--- CPU UTILIZED ---+		DB2 CPU%	Total
	Timestamp	Job Elapsed	DB2 % of Et	Job CPU	DB2 % of CPU	DB2 CPU%		
S DBP1001D	08/30 21:34	00:17:32	89.1	00:08:59	82.8	--	98.0	\$ 446.77
_ HRP4001W	08/30 21:34	00:32:15	2.7	00:01:06	7.6	--	1.1	\$ 5.10
_ DBP1002W	08/30 21:34	00:17:26	39.4	00:00:14	16.5	--	0.5	\$ 2.42
_ SBASTPRG	08/31 01:01	00:00:01	28.3	~ 0:00	37.5	--	0.0	\$ 0.01
_ CSBJA	08/31 09:25	00:00:07	12.1	~ 0:00	3.7	--	0.0	\$ 0.01
_ CSBJA	08/31 09:25	~ 0:00	3.5	~ 0:00	12.5	--	0.0	\$ 0.01
_ CSBIA	08/31 13:18	00:00:09	5.5	~ 0:00	4.6	--	0.0	\$ 0.01
_ CSBIA	08/31 13:19	00:00:03	1.9	~ 0:00	11.0	--	0.0	\$ 0.01
_ CSBIA	08/31 13:20	00:00:02	0.4	~ 0:00	2.0	--	0.0	\$ 0.01
_ CSBIA	08/31 13:20	00:00:01	0.5	~ 0:00	5.3	--	0.0	\$ 0.01
_ CSBIA	08/31 13:35	00:00:27	0.0	~ 0:00	1.9	--	0.0	\$ 0.01
_ CSBIA	08/31 13:35	00:00:01	0.4	~ 0:00	5.3	--	0.0	\$ 0.01
_ CSBJX	08/31 13:42	00:00:14	0.3	00:00:06	0.1	--	0.0	\$ 0.01
_ CSBJA	08/31 13:56	00:00:11	0.3	~ 0:00	0.8	--	0.0	\$ 0.01
_ CSBJA	08/31 13:56	~ 0:00	1.0	~ 0:00	6.5	--	0.0	\$ 0.01

Batch Analyzer view of steps

SoftBase Systems

Batch Analyzer Version 3.1.0

=== SQL Performance Analysis (Steps) ===

Command ==> █ Scroll ==> CSR

Filter: ON Intervals: OFF From: 08/30/09 To: 08/31/09 Loctn: DB8G

->

Jobname	StepName	Step Start Timestamp	Step Elapsed	DB2 % of Et	CPU UTILIZED CPU	DB2 % CPU	I	DB2 CPU%	Total DB2 Cost
DBP1001D	DB10011	08/30 21:34	00:17:32	89.2	00:08:59	82.8	--	99.9	\$ 446.77
DBP1001D	DB10012	08/30 21:52	00:00:01	5.7	~ 0:00	0.7	--	0.0	\$ 0.01

Note: A blue arrow points to the StepName column header, and a rounded rectangle highlights the StepName values in the data rows.

Batch Analyzer view of steps

SoftBase Systems Batch Analyzer Version 3.1.0

=== SQL Performance Analysis (Steps) ===

Command ==> █ Scroll ==> CSR

Filter: ON Intervals: OFF From: 08/30/09 To: 08/31/09 Loctn: DB8G

Jobname	StepName	Step Start Timestamp	Step Elapsed	DB2 % of Et	CPU UTILIZED Step CPU	DB2 % CPU	I	DB2 CPU% Steps	Total DB2 Cost
DBP1001D	DB10011	08/30 21:34	00:17:32	89.2	00:08:59	82.8	--	99.9	\$ 446.77
DBP1001D	DB10012	08/30 21:52	00:00:01	5.7	~ 0:00	0.7	--	0.0	\$ 0.01

DB2 CPU% Total DB2 Cost

99.9 \$ 446.77

0.0 \$ 0.01

Batch Analyzer view of steps

SoftBase Systems Batch Analyzer Version 3.1.0

=== SQL Performance Analysis (Steps) ===

Command ==> █ Scroll ==> CSR

Filter: ON Intervals: OFF From: 08/30/09 To: 08/31/09 Loctn: DB8G

->

Jobname	StepName	Step Start Timestamp	+-- RUN TIME --+		+-CPU UTILIZED-		DB2 CPU%	DB2 I Steps	Total DB2 Cost
			Step Elapsed	Step DB2 % of Et	Step CPU	Step DB2 % CPU			
S	DBP1001D DB10011	08/30 21:34	00:17:32	89.2	00:08:59	82.8	--	99.9	\$ 446.77
_	DBP1001D DB10012	08/30 21:52	00:00:01	5.7	~ 0:00	0.7	--	0.0	\$ 0.01

Batch Analyzer view of SQL statements

SoftBase Systems

Batch Analyzer Version 3.1.0

=== SQL Performance Analysis ===

Command ==> █

Filter: ON Intervals: OFF From: 08/30/09 To: 08/31/09 Loctn: DB8G

Commands: S : Show SQL D : Dynamic SQL L : timeLine ->

Scroll ==> CSR

S	Jobname	Plan	Package	Step Start Timestamp	Stmt Num	Stmt Type	I	DB2 All	CPU % Stmt	Total Cost
-	DBP1001D	SBTBATCH	SBTU001	08/30 21:34	670	UPDAT	-	98.8		\$ 441.62
-	DBP1001D	SBTBATCH	SBTU001	08/30 21:34	475	OPEN	-	1.0		\$ 4.78
-	DBP1001D	SBTBATCH	SBTU001	08/30 21:34	603	INSRT	-	0.0		\$ 0.36
-	DBP1001D	SBTBATCH	SBTU001	08/30 21:34	710	DELET	-	0.0		\$ 0.01
-	DBP1001D	SBTBATCH	SBTU001	08/30 21:34	527	FETCH	-	0.0		\$ 0.01
-	DBP1001D	SBTBATCH	SBTU001	08/30 21:34	574	CLOSE	-	0.0		\$ 0.01
-	DBP1001D	SBTBATCH	SBTU001	08/30 21:34	746	COMMT	-	0.0		\$ 0.01

Batch Analyzer view of SQL statements

SoftBase Systems

Batch Analyzer Version 3.1.0

=== SQL Performance Analysis ===

Command ==> █

Filter: ON Intervals: OFF From: 08/30/09 To: 08/31/09 Loctn: DB8G

Commands: S : Show SQL D : Dynamic SQL L : timeLine ->

Scroll ==> CSR

S	Jobname	Plan	Package	Step Start Timestamp	Stmt Num	Stmt Type	I	DB2 CPU % All Stmts	Total Cost
-	DBP1001D	SBTBATCH	SBTU001	08/30 21:34	670	UPDAT	-	98.8	\$ 441.62
-	DBP1001D	SBTBATCH	SBTU001	08/30 21:34	475	OPEN	-	1.0	\$ 4.78
-	DBP1001D	SBTBATCH	SBTU001	08/30 21:34	603	INSRT	-	0.0	\$ 0.36
-	DBP1001D	SBTBATCH	SBTU001	08/30 21:34	710	DELET	-	0.0	\$ 0.01
-	DBP1001D	SBTBATCH	SBTU001	08/30 21:34	527	FETCH	-	0.0	\$ 0.01
-	DBP1001D	SBTBATCH	SBTU001	08/30 21:34	574	CLOSE	-	0.0	\$ 0.01
-	DBP1001D	SBTBATCH	SBTU001	08/30 21:34	746	COMMT	-	0.0	\$ 0.01

Batch Analyzer view of SQL statements

SoftBase Systems

Batch Analyzer Version 3.1.0

=== SQL Performance Analysis ===

Command ==> █

Filter: ON Intervals: OFF From: 08/30/09 To: 08/31/09 Loctn: DB8G

Commands: S : Show SQL D : Dynamic SQL L : timeLine ->

Scroll ==> CSR

S	Jobname	Plan	Package	Step Start Timestamp	Stmt Num	Stmt Type	I	DB2 CPU % All Stmt	Total Cost
-	DBP1001D	SBTBATCH	SBTU001	08/30 21:34	670	UPDAT	-	98.8	\$ 441.62
-	DBP1001D	SBTBATCH	SBTU001	08/30 21:34	475	OPEN	-	1.0	\$ 4.78
-	DBP1001D	SBTBATCH	SBTU001	08/30 21:34	603	INSRT	-	0.0	\$ 0.36
-	DBP1001D	SBTBATCH	SBTU001	08/30 21:34	710	DELET	-	0.0	\$ 0.01
-	DBP1001D	SBTBATCH	SBTU001	08/30 21:34	527	FETCH	-	0.0	\$ 0.01
-	DBP1001D	SBTBATCH	SBTU001	08/30 21:34	574	CLOSE	-	0.0	\$ 0.01
-	DBP1001D	SBTBATCH	SBTU001	08/30 21:34	746	COMMT	-	0.0	\$ 0.01

Batch Analyzer view of SQL statements

SoftBase Systems

Batch Analyzer Version 3.1.0

=== SQL Performance Analysis ===

Command ==> █

Filter: ON Intervals: OFF From: 08/30/09 To: 08/31/09 Loctn: DB8G

Commands: S : Show SQL D : Dynamic SQL L : timeLine ->

Scroll ==> CSR

S	Jobname	Plan	Package	Step Start Timestamp	Stmt Num	Stmt Type	I	DB2 CPU %	Total Cost
S	DBP1001D	SBTBATCH	SBTU001	08/30 21:34	670	UPDAT	-	98.8	\$ 441.62
-	DBP1001D	SBTBATCH	SBTU001	08/30 21:34	475	OPEN	-	1.0	\$ 4.78
-	DBP1001D	SBTBATCH	SBTU001	08/30 21:34	603	INSRT	-	0.0	\$ 0.36
-	DBP1001D	SBTBATCH	SBTU001	08/30 21:34	710	DELET	-	0.0	\$ 0.01
-	DBP1001D	SBTBATCH	SBTU001	08/30 21:34	527	FETCH	-	0.0	\$ 0.01
-	DBP1001D	SBTBATCH	SBTU001	08/30 21:34	574	CLOSE	-	0.0	\$ 0.01
-	DBP1001D	SBTBATCH	SBTU001	08/30 21:34	746	COMMT	-	0.0	\$ 0.01

Batch Analyzer view of SQL statements

```

SoftBase Systems          Batch Analyzer Version 3.1.0          Row 1 to 2 of 2
Command ==> █          Scroll ==> CSR

JobName: DBP1001D  Step: DB10011  Program: SBTU001  SSID: DB8G
Plan: SBTBATCH  Type:          Collid:

----- Performance -----
CPU as pct of Elapsed..      61.0          Total Cost..: $ 441.62
          Average          Maximum          Total  %of Total
-----
Elapsed.Time...      3.614          9.840          722.816          76.9
CPU Time.....      2.208          4.396          441.621          98.8
Rows Affected..      502500          1000000          100500000

----- SQL Text ( statement number: 670 ) -----
UPDATE SBTTEST . EMPL_HISTORY SET UPDATE_USER = CURRENT SQLID ,
UPDATE_TS = CURRENT TIMESTAMP
***** Bottom of data *****

```


Batch Analyzer view of SQL statements

SoftBase Systems

Batch Analyzer Version 3.1.0

=== SQL Performance Analysis ===

Command ==> █

Filter: ON Intervals: OFF From: 08/30/09 To: 08/31/09 Loctn: DB8G

Commands: S : Show SQL D : Dynamic SQL L : timeLine ->

Scroll ==> CSR

S	Jobname	Plan	Package	Step Start Timestamp	Stmt Num	Stmt Type	I	DB2 CPU % All Stmt	Total Cost
-	DBP1001D	SBTBATCH	SBTU001	08/30 21:34	670	UPDAT	-	98.8	\$ 441.62
-	DBP1001D	SBTBATCH	SBTU001	08/30 21:34	475	OPEN	-	1.0	\$ 4.78
-	DBP1001D	SBTBATCH	SBTU001	08/30 21:34	603	INSRT	-	0.0	\$ 0.36
-	DBP1001D	SBTBATCH	SBTU001	08/30 21:34	710	DELET	-	0.0	\$ 0.01
-	DBP1001D	SBTBATCH	SBTU001	08/30 21:34	527	FETCH	-	0.0	\$ 0.01
-	DBP1001D	SBTBATCH	SBTU001	08/30 21:34	574	CLOSE	-	0.0	\$ 0.01
-	DBP1001D	SBTBATCH	SBTU001	08/30 21:34	746	COMMT	-	0.0	\$ 0.01

Batch Analyzer view of SQL statements

```

SoftBase Systems
Batch Analyzer Version 3.1.0
=== SQL Performance Analysis ===

Command ==> █
Filter: ON Intervals: OFF From: 08/30/09 To: 08/31/09 Loctn: DB8G
Commands: S : Show SQL D : Dynamic SQL L : timeLine
Scroll ==> CSR
->

Step Start Stmt Stmt DB2 CPU % Total
S Jobname Plan Package Timestamp Num Type I All Stmt Cost
- - - - -
_ DBP1001D SBTBATCH SBTU001 08/30 21:34 670 UPDAT - 98.8 $ 441.62
_ DBP1001D SBTBATCH SBTU001 08/30 21:34 475 OPEN - 1.0 $ 4.78
_ DBP1001D SBTBATCH SBTU001 08/30 21:34 603 INSRT - 0.0 $ 0.36
_ DBP1001D SBTBATCH SBTU001 08/30 21:34 710 DELET - 0.0 $ 0.01
_ DBP1001D SBTBATCH SBTU001 08/30 21:34 527 FETCH - 0.0 $ 0.01
_ DBP1001D SBTBATCH SBTU001 08/30 21:34 574 CLOSE - 0.0 $ 0.01
_ DBP1001D SBTBATCH SBTU001 08/30 21:34 746 COMMT - 0.0 $ 0.01

```


Batch Analyzer view of SQL statements

SoftBase Systems

Batch Analyzer Version 3.1.0

=== SQL Performance Analysis ===

Command ==> █

Filter: ON Intervals: OFF From: 08/30/09 To: 08/31/09 Loctn: DB8G

Scroll ==> CSR

<-

S	JobName	Plan	Package	Stmt Num	Stmt Type	Stmt Elapsed	Stmt Cpu	Execute Count	DB2 All	CPU% Jobs
-	DBP1001D	SBTBATCH	SBTU001	670	UPDAT	722.8	441.6	200		98.8
-	DBP1001D	SBTBATCH	SBTU001	475	OPEN	27.5	4.8	4		1.0
-	DBP1001D	SBTBATCH	SBTU001	603	INSRT	154.7	0.4	1000000		0.0
-	DBP1001D	SBTBATCH	SBTU001	710	DELET	16.3	0.0	2		0.0
-	DBP1001D	SBTBATCH	SBTU001	527	FETCH	17.4	0.0	2000004		0.0
-	DBP1001D	SBTBATCH	SBTU001	574	CLOSE	0.0	0.0	4		0.0
-	DBP1001D	SBTBATCH	SBTU001	746	COMMT	0.0	0.0	1		0.0

4

Tue 12 Jan 02:28

Batch Analyzer view of SQL statements

SoftBase Systems

Batch Analyzer Version 3.1.0

=== SQL Performance Analysis ===

Command ==> █

Filter: ON Intervals: OFF From: 08/30/09 To: 08/31/09 Loctn: DB8G

Scroll ==> CSR

<-

S	JobName	Plan	Package	Stmt Num	Stmt Type	Stmt Elapsed	Stmt Cpu	Execute Count	DB2 All	CPU% Jobs
-	DBP1001D	SBTBATCH	SBTU001	670	UPDAT	722.8	441.6	200		98.8
-	DBP1001D	SBTBATCH	SBTU001	475	OPEN	27.5	4.8	4		1.0
-	DBP1001D	SBTBATCH	SBTU001	603	INSRT	154.7	0.4	1000000		0.0
-	DBP1001D	SBTBATCH	SBTU001	710	DELET	16.3	0.0	2		0.0
-	DBP1001D	SBTBATCH	SBTU001	527	FETCH	17.4	0.0	2000004		0.0
-	DBP1001D	SBTBATCH	SBTU001	574	CLOSE	0.0	0.0	4		0.0
-	DBP1001D	SBTBATCH	SBTU001	746	COMMT	0.0	0.0	1		0.0

4

Tue 12 Jan 02:28

Batch Analyzer view of SQL statements

SoftBase Systems

Batch Analyzer Version 3.1.0

=== SQL Performance Analysis ===

Command ==> █

Filter: ON Intervals: OFF From: 08/30/09 To: 08/31/09 Locn: DB8G

Scroll ==> CSR

<-

S	JobName	Plan	Package	Stmt Num	Stmt Type	Stmt Elapsed	Stmt Cpu	Execute Count	DB2 All	CPU% Jobs
-	DBP1001D	SBTBATCH	SBTU001	670	UPDAT	722.8	441.6	200	98.8	
-	DBP1001D	SBTBATCH	SBTU001	475	OPEN	27.5	4.8	4	1.0	
-	DBP1001D	SBTBATCH	SBTU001	603	INSRT	154.7	0.4	1000000	0.0	
-	DBP1001D	SBTBATCH	SBTU001	710	DELET	16.3	0.0	2	0.0	
-	DBP1001D	SBTBATCH	SBTU001	527	FETCH	17.4	0.0	2000004	0.0	
-	DBP1001D	SBTBATCH	SBTU001	574	CLOSE	0.0	0.0	4	0.0	
-	DBP1001D	SBTBATCH	SBTU001	746	COMMT	0.0	0.0	1	0.0	

4

Tue 12 Jan 02:28

Batch Analyzer view of SQL statements

SoftBase Systems Batch Analyzer Version 3.1.0
 === SQL Performance Analysis ===

Command ===> **s** Scroll ===> CSR
 Filter: ON Intervals: OFF From: 08/30/09 To: 08/31/09 Loctn: DB8G

S	JobName	Plan	Package	Stmt Num	Stmt Type	Stmt Elapsed	Stmt Cpu	Execute Count	DB2 All	CPU% Jobs
-	DBP1001D	SBTBATCH	SBTU001	670	UPDAT	722.8	441.6	200	98.8	
-	DBP1001D	SBTBATCH	SBTU001	475	OPEN	27.5	4.8	4	1.0	
-	DBP1001D	SBTBATCH	SBTU001	603	INSRT	154.7	0.4	1000000	0.0	
-	DBP1001D	SBTBATCH	SBTU001	710	DELET	16.3	0.0	2	0.0	
-	DBP1001D	SBTBATCH	SBTU001	527	FETCH	17.4	0.0	2000004	0.0	
-	DBP1001D	SBTBATCH	SBTU001	574	CLOSE	0.0	0.0	4	0.0	
-	DBP1001D	SBTBATCH	SBTU001	746	COMMT	0.0	0.0	1	0.0	

Batch Analyzer view of SQL statements

SoftBase Systems

Batch Analyzer Version 3.1.0

=== SQL Performance Analysis ===

Command ==> █

Filter: ON Intervals: OFF From: 08/30/09 To: 08/31/09 Loctn: DB8G

Scroll ==> CSR

<-

S	JobName	Plan	Package	Stmt Num	Stmt Type	Stmt Elapsed	Stmt Cpu	Execute Count	DB2 All	CPU% Jobs
-	DBP1001D	SBTBATCH	SBTU001	527	FETCH	17.4	0.0	2000004		0.0
-	DBP1001D	SBTBATCH	SBTU001	603	INSRT	154.7	0.4	1000000		0.0
-	DBP1001D	SBTBATCH	SBTU001	670	UPDAT	722.8	441.6	200		98.8
-	DBP1001D	SBTBATCH	SBTU001	475	OPEN	27.5	4.8	4		1.0
-	DBP1001D	SBTBATCH	SBTU001	574	CLOSE	0.0	0.0	4		0.0
-	DBP1001D	SBTBATCH	SBTU001	710	DELET	16.3	0.0	2		0.0
-	DBP1001D	SBTBATCH	SBTU001	746	COMMT	0.0	0.0	1		0.0

4

Tue 12 Jan 02:32

Batch Analyzer main dialogue panel

```

SoftBase Systems
SoftBase Systems' Batch Analyzer

Option ==> 2

Current Location: DB8G
Startup DB2 subsystem: DB8G

Calculate Intervals: OFF
Perform Filtering: ON

0) User Profile Settings
1) Application Performance Analysis
2) SQL Performance Analysis
3) Batch Throughput Analysis
4) Recovery Impact Analysis

5) Application Profile Maintenance
6) Contact Maintenance

A) Administration

X) Exit

+----- Specify Filter Values -----+
| Filter      Value          Enable |
+-----+-----+-----+
| JobName:   DBP*           Y      |
| StepName:                               N      |
| Plan:                               N      |
| Package:                               N      |
| Subsystem:                               N      |
| Application:                               N      |
+-----+-----+-----+
|----- Display Date range -----|
| Begin:    01 / 01 / 2009          |
| End:     12 / 31 / 2009          |
+-----+-----+-----+

```


Batch Analyzer main dialogue panel

SoftBase Systems

SoftBase Systems' Batch Analyzer

Option ==> 2

Current Location: DB8G
Startup DB2 subsystem: DB8G

Calculate Intervals: OFF
Perform Filtering: ON

0) User Profile Settings

1) Application Performance Analysis

2) SQL Performance Analysis

3) Batch Throughput Analysis

4) Recovery Impact Analysis

5) Application Profile Maintenance

6) Contact Maintenance

A) Administration

X) Exit

+----- Specify Filter Values -----+

Filter	Value	Enable
JobName:	DBP*	Y
StepName:		N
Plan:		N
Package:		N
Subsystem:		N
Application:		N

+----- Display Date range -----+

Begin: 01 / 01 / 2009
End: 12 / 31 / 2009

Batch Analyzer view of jobs

SoftBase Systems Batch Analyzer Version 3.1.0

=== SQL Performance Analysis (Jobs) ===

Command ==> █ Scroll ==> CSR

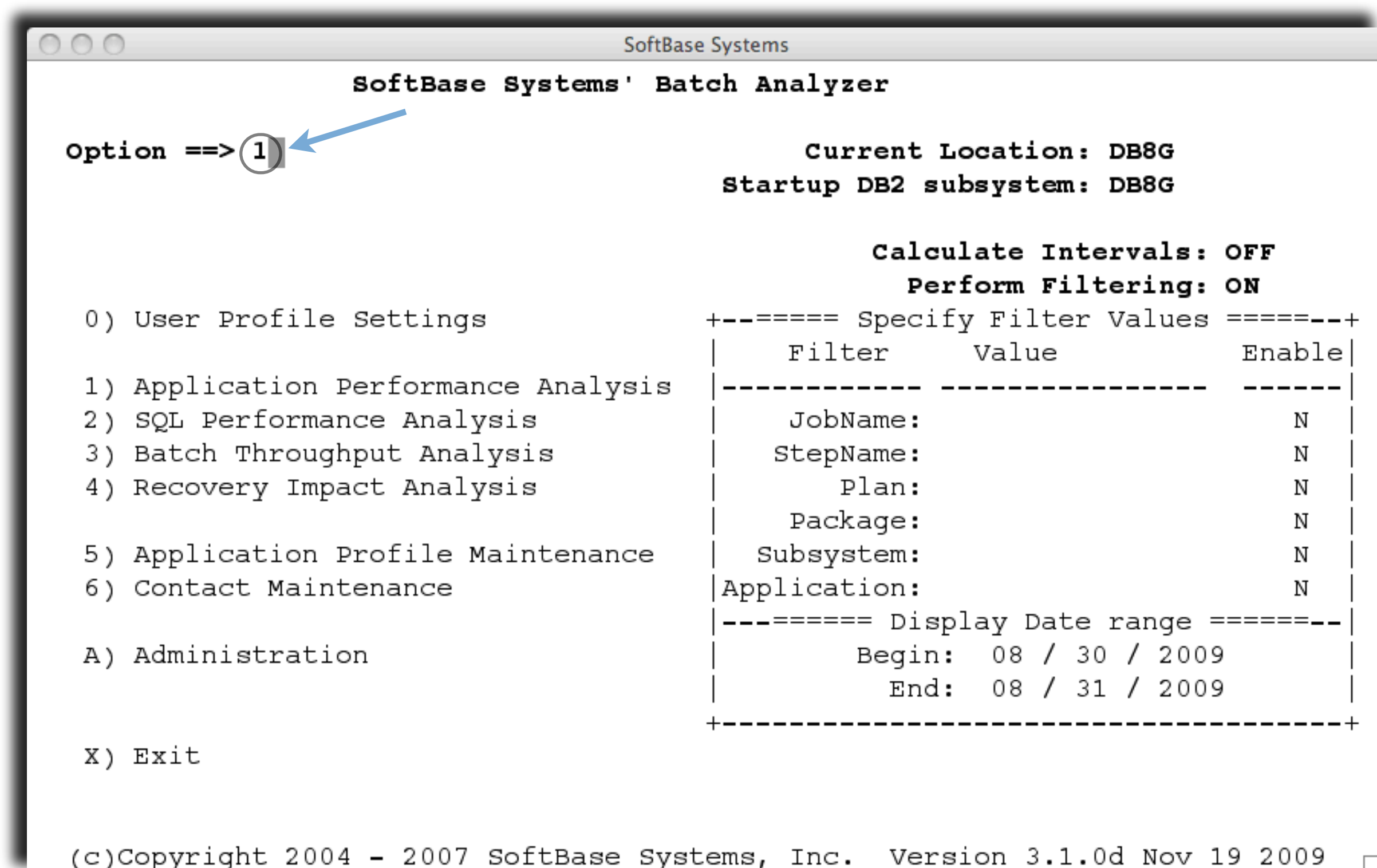
Filter: ON Intervals: OFF From: 01/01/09 To: 12/31/09 Loctn: DB8G

→

DBP* Jobname	Job Start		RUN TIME		CPU UTILIZED		DB2 CPU%	Total DB2 Cost
	Timestamp	Job Elapsed	DB2 % of Et	Job CPU	DB2 % of CPU			
DBP1002W	05/03 22:02	01:37:35	70.7	00:27:14	82.7	9.3	\$1352.75	
DBP1001D	02/24 13:46	00:24:23	91.3	00:10:05	80.5	3.3	\$ 487.43	
DBP1001D	05/11 08:52	00:31:49	93.1	00:10:00	81.4	3.3	\$ 488.66	
DBP1001D	05/11 15:57	00:40:10	94.8	00:09:50	81.3	3.3	\$ 480.84	
DBP1001D	03/23 14:10	00:22:52	91.0	00:09:32	81.0	3.1	\$ 463.51	
DBP1001D	08/24 20:34	00:24:00	90.6	00:09:19	81.3	3.1	\$ 455.10	
DBP1001D	08/30 21:34	00:17:32	89.1	00:08:59	82.8	3.0	\$ 446.77	
DBP1001D	09/01 19:26	00:06:33	54.2	00:02:38	67.8	0.7	\$ 107.54	
DBP1002W	03/23 14:10	00:12:33	97.0	00:00:16	16.5	0.0	\$ 2.72	
DBP1001D	05/03 22:03	00:04:19	99.8	~ 0:00	10.0	0.0	\$ 0.01	
DBP1002W	08/24 20:34	00:17:43	40.7	00:00:17	17.5	0.0	\$ 2.99	
DBP1002W	02/24 13:47	00:12:02	99.8	~ 0:00	7.6	0.0	\$ 0.01	
DBP1002W	08/30 21:34	00:17:26	39.4	00:00:14	16.5	0.0	\$ 2.42	
DBP1002W	05/11 08:53	00:23:37	57.5	~ 0:00	9.2	0.0	\$ 0.01	

Wed 13 Jan 02:05

Batch Analyzer main dialogue panel



Batch Analyzer view of applications

SoftBase Systems

Batch Analyzer Version 3.1.0

==== **Application Performance Analysis** ====

Command ==> █

Filter: ON Intervals: OFF From: 08/01/09 To: 08/31/09 Loctn: DB8G

Report Summary Level(A/J/S): A A - Application J - Job S - SQL

Scroll ==> CSR

->

Application	+--- RUN TIME ---+		+---CPU UTILIZED---+		Job Cnt	DB2 AllJobs	CPU% DB2	Total Cost
	Total Elapsed	DB2 % of Et	Total CPU	DB2% of CPU				
Total of all jobs	0139 Hrs	0.8	00:49:33	32.1	320	100.0	\$ 956.14	
_ ALL	0139 Hrs	0.8	00:49:33	32.1	320	100.0	\$ 956.14	
_ Database Maintenance	01:16:43	67.1	00:18:50	80.2	4	94.8	\$ 907.28	
_ Human Resources	01:05:07	3.2	00:02:21	8.0	2	1.1	\$ 11.36	
_ Database Nightly Prg	00:01:15	48.2	00:00:01	43.3	23	0.0	\$ 0.43	
_ France demo	~ 0:00	0.0	~ 0:00	0.0	0	0.0	\$ 0.01	
_ CSBP	~ 0:00	0.0	~ 0:00	0.0	0	0.0	\$ 0.01	
_ HR History	~ 0:00	0.0	~ 0:00	0.0	0	0.0	\$ 0.01	
_ Inventory	~ 0:00	0.0	~ 0:00	0.0	0	0.0	\$ 0.01	
_ Jane's jobs	00:01:46	49.2	00:00:02	22.5	6	0.0	\$ 0.61	
_ Jane's Demo	~ 0:00	0.0	~ 0:00	0.0	0	0.0	\$ 0.01	
_ Jane's Slice Jobs	00:00:32	68.7	~ 0:00	48.5	1	0.0	\$ 0.24	

Batch Analyzer view of applications

```

SoftBase Systems                                     SoftBase Systems
Batch Analyzer Version 3.1.0                         Row 1 to 1 of 1
=== Application Profile Workbench ===
Command ==> █                                       Scroll ==> CSR

          Application Information:
      Name: Human Resources
      Shared: Y
Description: HR Jobs
      Creator: CSB4

Primary Contact                Phone number    Email address
-----
Spires, Jim                    276-544-3366   jim@softbase.com

Job Name Primary Contact                Phone number    Email address
-----
HR* Scardo, Chip                        800-669-7076   chip@softbase.com
***** Bottom of data *****

```

Batch Analyzer view of applications

SoftBase Systems

Batch Analyzer Version 3.1.0

==== **Application Performance Analysis** ====

Command ==> █

Filter: ON Intervals: OFF From: 08/01/09 To: 08/31/09 Loctn: DB8G

Report Summary Level(A/J/S): A A - Application J - Job S - SQL

Scroll ==> CSR

->

Application	+--- RUN TIME ---+		+---CPU UTILIZED---+		Job Cnt	DB2 AllJobs	CPU% DB2	Total Cost
	Total Elapsed	DB2 % of Et	Total CPU	DB2% of CPU				
Total of all jobs	0139 Hrs	0.8	00:49:33	32.1	320	100.0	\$ 956.14	
_ ALL	0139 Hrs	0.8	00:49:33	32.1	320	100.0	\$ 956.14	
_ Database Maintenance	01:16:43	67.1	00:18:50	80.2	4	94.8	\$ 907.28	
_ Human Resources	01:05:07	3.2	00:02:21	8.0	2	1.1	\$ 11.36	
_ Database Nightly Prg	00:01:15	48.2	00:00:01	43.3	23	0.0	\$ 0.43	
_ France demo	~ 0:00	0.0	~ 0:00	0.0	0	0.0	\$ 0.01	
_ CSBP	~ 0:00	0.0	~ 0:00	0.0	0	0.0	\$ 0.01	
_ HR History	~ 0:00	0.0	~ 0:00	0.0	0	0.0	\$ 0.01	
_ Inventory	~ 0:00	0.0	~ 0:00	0.0	0	0.0	\$ 0.01	
_ Jane's jobs	00:01:46	49.2	00:00:02	22.5	6	0.0	\$ 0.61	
_ Jane's Demo	~ 0:00	0.0	~ 0:00	0.0	0	0.0	\$ 0.01	
_ Jane's Slice Jobs	00:00:32	68.7	~ 0:00	48.5	1	0.0	\$ 0.24	

Batch Analyzer view of applications

SoftBase Systems Batch Analyzer Version 3.1.0

==== **Application Performance Analysis** ====

Command ==> █

Filter: ON Intervals: OFF (From: 08/01/09 To: 08/31/09) Loctn: DB8G

Report Summary Level(A/J/S): A A - Application J - Job S - SQL

Scroll ==> CSR

->

Application	+--- RUN TIME ---+		+---CPU UTILIZED---+				
	Total Elapsed	DB2 % of Et	Total CPU	DB2% of CPU	Job Cnt	DB2 CPU% AllJobs	Total Cost
Total of all jobs	0139 Hrs	0.8	00:49:33	32.1	320	100.0	\$ 956.14
ALL	0139 Hrs	0.8	00:49:33	32.1	320	100.0	\$ 956.14
Database Maintenance	01:16:43	67.1	00:18:50	80.2	4	94.8	\$ 907.28
Human Resources	01:05:07	3.2	00:02:21	8.0	2	1.1	\$ 11.36
Database Nightly Prg	00:01:15	48.2	00:00:01	43.3	23	0.0	\$ 0.43
France demo	~ 0:00	0.0	~ 0:00	0.0	0	0.0	\$ 0.01
CSBP	~ 0:00	0.0	~ 0:00	0.0	0	0.0	\$ 0.01
HR History	~ 0:00	0.0	~ 0:00	0.0	0	0.0	\$ 0.01
Inventory	~ 0:00	0.0	~ 0:00	0.0	0	0.0	\$ 0.01
Jane's jobs	00:01:46	49.2	00:00:02	22.5	6	0.0	\$ 0.61
Jane's Demo	~ 0:00	0.0	~ 0:00	0.0	0	0.0	\$ 0.01
Jane's Slice Jobs	00:00:32	68.7	~ 0:00	48.5	1	0.0	\$ 0.24

Batch Analyzer view of applications

SoftBase Systems Batch Analyzer Version 3.1.0

==== Application Performance Analysis ====

Command ==> █ Scroll ==> CSR

Filter: ON Intervals: OFF (From: 08/01/09 To: 08/31/09) Loctn: DB8G

Report Summary Level(A/J/S): A A - Application J - Job S - SQL

->

Application	+--- RUN TIME ---+		+---CPU UTILIZED---+				Total Cost
	Total Elapsed	DB2 % of Et	Total CPU	DB2% of CPU	Job Cnt	DB2 CPU% AllJobs	
Total of all jobs	0139 Hrs	0.8	00:49:33	32.1	320	100.0	\$ 956.14
ALL	0139 Hrs	0.8	00:49:33	32.1	320	100.0	\$ 956.14
Database Maintenance	01:16:43	67.1	00:18:50	80.2	4	94.8	\$ 907.28
Human Resources	01:05:07	3.2	00:02:21	8.0	2	1.1	\$ 11.36
Database Nightly Prg	00:01:15	48.2	00:00:01	43.3	23	0.0	\$ 0.43
France demo	~ 0:00	0.0	~ 0:00	0.0	0	0.0	\$ 0.01
CSBP	~ 0:00	0.0	~ 0:00	0.0	0	0.0	\$ 0.01
HR History	~ 0:00	0.0	~ 0:00	0.0	0	0.0	\$ 0.01
Inventory	~ 0:00	0.0	~ 0:00	0.0	0	0.0	\$ 0.01
Jane's jobs	00:01:46	49.2	00:00:02	22.5	6	0.0	\$ 0.61
Jane's Demo	~ 0:00	0.0	~ 0:00	0.0	0	0.0	\$ 0.01
Jane's Slice Jobs	00:00:32	68.7	~ 0:00	48.5	1	0.0	\$ 0.24

Batch Analyzer view of applications

SoftBase Systems Batch Analyzer Version 3.1.0

==== **Application Performance Analysis** ====

Command ==> █ Scroll ==> CSR

Filter: ON Intervals: OFF From: 08/01/09 To: 08/31/09 Loctn: DB8G

Report Summary Level(A/J/S): **A** (A - Application) J - Job S - SQL

->

Application	+--- RUN TIME ---+		+---CPU UTILIZED---+		Job Cnt	DB2 AllJobs	CPU% DB2	Total Cost
	Total Elapsed	DB2 % of Et	Total CPU	DB2% of CPU				
Total of all jobs	0139 Hrs	0.8	00:49:33	32.1	320	100.0	\$ 956.14	
ALL	0139 Hrs	0.8	00:49:33	32.1	320	100.0	\$ 956.14	
Database Maintenance	01:16:43	67.1	00:18:50	80.2	4	94.8	\$ 907.28	
Human Resources	01:05:07	3.2	00:02:21	8.0	2	1.1	\$ 11.36	
Database Nightly Prg	00:01:15	48.2	00:00:01	43.3	23	0.0	\$ 0.43	
France demo	~ 0:00	0.0	~ 0:00	0.0	0	0.0	\$ 0.01	
CSBP	~ 0:00	0.0	~ 0:00	0.0	0	0.0	\$ 0.01	
HR History	~ 0:00	0.0	~ 0:00	0.0	0	0.0	\$ 0.01	
Inventory	~ 0:00	0.0	~ 0:00	0.0	0	0.0	\$ 0.01	
Jane's jobs	00:01:46	49.2	00:00:02	22.5	6	0.0	\$ 0.61	
Jane's Demo	~ 0:00	0.0	~ 0:00	0.0	0	0.0	\$ 0.01	
Jane's Slice Jobs	00:00:32	68.7	~ 0:00	48.5	1	0.0	\$ 0.24	

Batch Analyzer summary view of jobs

SoftBase Systems Batch Analyzer Version 3.1.0

=== Job Summary SQL Performance Analysis ===

Command ==> █ Scroll ==> CSR

Filter: ON Intervals: OFF From: 08/01/09 To: 08/31/09 Locn: DB8G

Report Summary Level(A/J/S): (J) A - Application (J - Job) S - SQL ->

+--- RUN TIME ---+				+---CPU UTILIZED---+					
Jobname	Exec Cnt	Job Elapsed	DB2 % of Et	Job CPU	DB2 % of CPU	DB2 CPU% all Jobs	Total DB2 Cost	Total Job Cost	
DBP1001D	2	00:41:33	90.0	00:18:18	82.0	94.3	\$ 901.87	\$1098.93	
HRP4001W	2	01:05:07	3.2	00:02:21	8.0	1.1	\$ 11.36	\$ 141.49	
CSBJSSA	15	00:08:40	5.9	00:00:33	17.4	0.6	\$ 5.77	\$ 33.18	
DBP1002W	2	00:35:10	40.0	00:00:31	17.0	0.5	\$ 5.41	\$ 31.68	
CSBIX	41	00:05:38	25.3	00:00:13	14.6	0.2	\$ 2.03	\$ 13.87	
CSBJA	105	00:52:41	0.5	00:02:01	1.8	0.2	\$ 2.23	\$ 121.50	
CSBJT	53	00:10:42	6.5	00:01:26	2.3	0.2	\$ 2.03	\$ 86.77	
CSBKX	23	00:12:11	3.2	00:00:25	10.5	0.2	\$ 2.64	\$ 25.12	
CSBJI	3	00:04:17	96.5	00:00:02	80.6	0.1	\$ 1.69	\$ 2.10	
CSBJPALL	10	00:05:01	12.5	00:00:19	5.3	0.1	\$ 1.03	\$ 19.21	
CSBJS	28	00:08:08	3.5	00:00:33	3.8	0.1	\$ 1.30	\$ 33.75	
CSBJV	26	00:04:34	5.6	00:00:18	6.6	0.1	\$ 1.22	\$ 18.19	
CSBJX	97	00:11:31	8.5	00:00:40	4.3	0.1	\$ 1.77	\$ 40.27	
CSBKA	404	00:17:12	0.4	00:01:02	1.6	0.1	\$ 1.06	\$ 62.82	
CSBJG	2	00:00:41	18.2	00:00:02	4.9	0.0	\$ 0.12	\$ 2.38	

Batch Analyzer summary view of jobs

SoftBase Systems Batch Analyzer Version 3.1.0

==== Job Summary SQL Performance Analysis ====

Command ==> █ Scroll ==> CSR

Filter: ON Intervals: OFF From: 08/01/09 To: 08/31/09 Loctn: DB8G

Report Summary Level(A/J/S): (J) A - Application (J - Job) S - SQL ->

Exec		Job		DB2 %		Job		DB2 %		DB2 CPU%		Total	Total
Jobname	Cnt	Elapsed	of Et	of CPU	of CPU	all	Jobs	DB2	Cost	Job	Cost		
DBP1001D	2	00:41:33	90.0	00:18:18	82.0	94.3	\$	901.87	\$1098.93				
HRP4001W	2	01:05:07	3.2	00:02:21	8.0	1.1	\$	11.36	\$ 141.49				
CSBJSSA	15	00:08:40	5.9	00:00:33	17.4	0.6	\$	5.77	\$ 33.18				
DBP1002W	2	00:35:10	40.0	00:00:31	17.0	0.5	\$	5.41	\$ 31.68				
CSBIX	41	00:05:38	25.3	00:00:13	14.6	0.2	\$	2.03	\$ 13.87				
CSBJA	105	00:52:41	0.5	00:02:01	1.8	0.2	\$	2.23	\$ 121.50				
CSBJT	53	00:10:42	6.5	00:01:26	2.3	0.2	\$	2.03	\$ 86.77				
CSBKX	23	00:12:11	3.2	00:00:25	10.5	0.2	\$	2.64	\$ 25.12				
CSBJI	3	00:04:17	96.5	00:00:02	80.6	0.1	\$	1.69	\$ 2.10				
CSBJPALL	10	00:05:01	12.5	00:00:19	5.3	0.1	\$	1.03	\$ 19.21				
CSBJS	28	00:08:08	3.5	00:00:33	3.8	0.1	\$	1.30	\$ 33.75				
CSBJV	26	00:04:34	5.6	00:00:18	6.6	0.1	\$	1.22	\$ 18.19				
CSBJX	97	00:11:31	8.5	00:00:40	4.3	0.1	\$	1.77	\$ 40.27				
CSBKA	404	00:17:12	0.4	00:01:02	1.6	0.1	\$	1.06	\$ 62.82				
CSBJG	2	00:00:41	18.2	00:00:02	4.9	0.0	\$	0.12	\$ 2.38				

Batch Analyzer summary view of jobs

SoftBase Systems Batch Analyzer Version 3.1.0

==== Job Summary SQL Performance Analysis ====

Command ==> █ Scroll ==> CSR

Filter: ON Intervals: OFF From: 08/01/09 To: 08/31/09 Loctn: DB8G

Report Summary Level(A/J/S): (J) A - Application (J - Job) S - SQL ->

+--- RUN TIME ---+				+--- CPU UTILIZED ---+					
Jobname	Exec Cnt	Job Elapsed	DB2 % of Et	Job CPU	DB2 % of CPU	DB2 CPU% all Jobs	Total DB2 Cost	Total Job Cost	
DBP1001D	2	00:41:33	90.0	00:18:18	82.0	94.3	\$ 901.87	\$1098.93	
HRP4001W	2	01:05:07	3.2	00:02:21	8.0	1.1	\$ 11.36	\$ 141.49	
CSBJSSA	15	00:08:40	5.9	00:00:33	17.4	0.6	\$ 5.77	\$ 33.18	
DBP1002W	2	00:35:10	40.0	00:00:31	17.0	0.5	\$ 5.41	\$ 31.68	
CSBIX	41	00:05:38	25.3	00:00:13	14.6	0.2	\$ 2.03	\$ 13.87	
CSBJA	105	00:52:41	0.5	00:02:01	1.8	0.2	\$ 2.23	\$ 121.50	
CSBJT	53	00:10:42	6.5	00:01:26	2.3	0.2	\$ 2.03	\$ 86.77	
CSBKX	23	00:12:11	3.2	00:00:25	10.5	0.2	\$ 2.64	\$ 25.12	
CSBJI	3	00:04:17	96.5	00:00:02	80.6	0.1	\$ 1.69	\$ 2.10	
CSBJPALL	10	00:05:01	12.5	00:00:19	5.3	0.1	\$ 1.03	\$ 19.21	
CSBJS	28	00:08:08	3.5	00:00:33	3.8	0.1	\$ 1.30	\$ 33.75	
CSBJV	26	00:04:34	5.6	00:00:18	6.6	0.1	\$ 1.22	\$ 18.19	
CSBJX	97	00:11:31	8.5	00:00:40	4.3	0.1	\$ 1.77	\$ 40.27	
CSBKA	404	00:17:12	0.4	00:01:02	1.6	0.1	\$ 1.06	\$ 62.82	
CSBJG	2	00:00:41	18.2	00:00:02	4.9	0.0	\$ 0.12	\$ 2.38	

Batch Analyzer summary view of jobs

SoftBase Systems Batch Analyzer Version 3.1.0

=== Job Summary SQL Performance Analysis ===

Command ==> █ Scroll ==> CSR

Filter: ON Intervals: OFF From: 08/01/09 To: 08/31/09 Loctn: DB8G

Report Summary Level(A/J/S): (J) A - Application (J - Job) S - SQL ->

+--- RUN TIME ---+---CPU UTILIZED---+

Jobname	Exec Cnt	Job Elapsed	DB2 % of Et	Job CPU	DB2 % of CPU	DB2 CPU% all Jobs	Total DB2 Cost	Total Job Cost
DBP1001D	2	00:41:33	90.0	00:18:18	82.0	94.3	\$ 901.87	\$1098.93
HRP4001W	2	01:05:07	3.2	00:02:21	8.0	1.1	\$ 11.36	\$ 141.49
CSBJSSA	15	00:08:40	5.9	00:00:33	17.4	0.6	\$ 5.77	\$ 33.18
DBP1002W	2	00:35:10	40.0	00:00:31	17.0	0.5	\$ 5.41	\$ 31.68
CSBIX	41	00:05:38	25.3	00:00:13	14.6	0.2	\$ 2.03	\$ 13.87
CSBJA	105	00:52:41	0.5	00:02:01	1.8	0.2	\$ 2.23	\$ 121.50
CSBJT	53	00:10:42	6.5	00:01:26	2.3	0.2	\$ 2.03	\$ 86.77
CSBKX	23	00:12:11	3.2	00:00:25	10.5	0.2	\$ 2.64	\$ 25.12
CSBJI	3	00:04:17	96.5	00:00:02	80.6	0.1	\$ 1.69	\$ 2.10
CSBJPALL	10	00:05:01	12.5	00:00:19	5.3	0.1	\$ 1.03	\$ 19.21
CSBJS	28	00:08:08	3.5	00:00:33	3.8	0.1	\$ 1.30	\$ 33.75
CSBJV	26	00:04:34	5.6	00:00:18	6.6	0.1	\$ 1.22	\$ 18.19
CSBJX	97	00:11:31	8.5	00:00:40	4.3	0.1	\$ 1.77	\$ 40.27
CSBKA	404	00:17:12	0.4	00:01:02	1.6	0.1	\$ 1.06	\$ 62.82
CSBJG	2	00:00:41	18.2	00:00:02	4.9	0.0	\$ 0.12	\$ 2.38

Batch Analyzer summary view of jobs

SoftBase Systems Batch Analyzer Version 3.1.0

=== Job Summary SQL Performance Analysis ===

Command ==> █ Scroll ==> CSR

Filter: ON Intervals: OFF From: 08/01/09 To: 08/31/09 Loctn: DB8G

Report Summary Level(A/J/S): (J) A - Application (J - Job) S - SQL ->

+--- RUN TIME ---+				+---CPU UTILIZED---+					
Jobname	Exec Cnt	Job Elapsed	DB2 % of Et	Job CPU	DB2 % of CPU	DB2 CPU%	Total DB2 Cost	Total Job Cost	
DBP1001D	2	00:41:33	90.0	00:18:18	82.0	94.3	\$ 901.87	\$1098.93	
HRP4001W	2	01:05:07	3.2	00:02:21	8.0	1.1	\$ 11.36	\$ 141.49	
CSBJSSA	15	00:08:40	5.9	00:00:33	17.4	0.6	\$ 5.77	\$ 33.18	
DBP1002W	2	00:35:10	40.0	00:00:31	17.0	0.5	\$ 5.41	\$ 31.68	
CSBIX	41	00:05:38	25.3	00:00:13	14.6	0.2	\$ 2.03	\$ 13.87	
CSBJA	105	00:52:41	0.5	00:02:01	1.8	0.2	\$ 2.23	\$ 121.50	
CSBJT	53	00:10:42	6.5	00:01:26	2.3	0.2	\$ 2.03	\$ 86.77	
CSBKX	23	00:12:11	3.2	00:00:25	10.5	0.2	\$ 2.64	\$ 25.12	
CSBJI	3	00:04:17	96.5	00:00:02	80.6	0.1	\$ 1.69	\$ 2.10	
CSBJPALL	10	00:05:01	12.5	00:00:19	5.3	0.1	\$ 1.03	\$ 19.21	
CSBJS	28	00:08:08	3.5	00:00:33	3.8	0.1	\$ 1.30	\$ 33.75	
CSBJV	26	00:04:34	5.6	00:00:18	6.6	0.1	\$ 1.22	\$ 18.19	
CSBJX	97	00:11:31	8.5	00:00:40	4.3	0.1	\$ 1.77	\$ 40.27	
CSBKA	404	00:17:12	0.4	00:01:02	1.6	0.1	\$ 1.06	\$ 62.82	
CSBJG	2	00:00:41	18.2	00:00:02	4.9	0.0	\$ 0.12	\$ 2.38	

Batch Analyzer summary view of jobs

SoftBase Systems Batch Analyzer Version 3.1.0

==== Job Summary SQL Performance Analysis ====

Command ==> █ Scroll ==> CSR

Filter: ON Intervals: OFF From: 08/01/09 To: 08/31/09 Loctn: DB8G

Report Summary Level(A/J/S): (J) A - Application (J - Job) S - SQL ->

Jobname	Exec Cnt	RUN TIME		CPU UTILIZED		DB2 CPU% all Jobs	Total DB2 Cost	Total Job Cost
		Job Elapsed	DB2 % of Et	Job CPU	DB2 % of CPU			
DBP1001D	2	00:41:33	90.0	00:18:18	82.0	94.3	\$ 901.87	\$1098.93
HRP4001W	2	01:05:07	3.2	00:02:21	8.0	1.1	\$ 11.36	\$ 141.49
CSBJSSA	15	00:08:40	5.9	00:00:33	17.4	0.6	\$ 5.77	\$ 33.18
DBP1002W	2	00:35:10	40.0	00:00:31	17.0	0.5	\$ 5.41	\$ 31.68
CSBIX	41	00:05:38	25.3	00:00:13	14.6	0.2	\$ 2.03	\$ 13.87
CSBJA	105	00:52:41	0.5	00:02:01	1.8	0.2	\$ 2.23	\$ 121.50
CSBJT	53	00:10:42	6.5	00:01:26	2.3	0.2	\$ 2.03	\$ 86.77
CSBKX	23	00:12:11	3.2	00:00:25	10.5	0.2	\$ 2.64	\$ 25.12
CSBJI	3	00:04:17	96.5	00:00:02	80.6	0.1	\$ 1.69	\$ 2.10
CSBJPALL	10	00:05:01	12.5	00:00:19	5.3	0.1	\$ 1.03	\$ 19.21
CSBJS	28	00:08:08	3.5	00:00:33	3.8	0.1	\$ 1.30	\$ 33.75
CSBJV	26	00:04:34	5.6	00:00:18	6.6	0.1	\$ 1.22	\$ 18.19
CSBJX	97	00:11:31	8.5	00:00:40	4.3	0.1	\$ 1.77	\$ 40.27
CSBKA	404	00:17:12	0.4	00:01:02	1.6	0.1	\$ 1.06	\$ 62.82
CSBJG	2	00:00:41	18.2	00:00:02	4.9	0.0	\$ 0.12	\$ 2.38

Batch Analyzer summary view of jobs

SoftBase Systems Batch Analyzer Version 3.1.0

=== Job Summary SQL Performance Analysis ===

Command ==> █ Scroll ==> CSR

Filter: ON Intervals: OFF From: 08/01/09 To: 08/31/09 Loctn: DB8G

Report Summary Level(A/J/S): (J) A - Application (J - Job) S - SQL

+--- RUN TIME ---+---CPU UTILIZED---+

Jobname	Exec Cnt	Job Elapsed	DB2 % of Et	Job CPU	DB2 % of CPU	DB2 CPU% all Jobs	Total DB2 Cost	Total Job Cost
DBP1001D	2	00:41:33	90.0	00:18:18	82.0	94.3	\$ 901.87	\$1098.93
HRP4001W	2	01:05:07	3.2	00:02:21	8.0	1.1	\$ 11.36	\$ 141.49
CSBJSSA	15	00:08:40	5.9	00:00:33	17.4	0.6	\$ 5.77	\$ 33.18
DBP1002W	2	00:35:10	40.0	00:00:31	17.0	0.5	\$ 5.41	\$ 31.68
CSBIX	41	00:05:38	25.3	00:00:13	14.6	0.2	\$ 2.03	\$ 13.87
CSBJA	105	00:52:41	0.5	00:02:01	1.8	0.2	\$ 2.23	\$ 121.50
CSBJT	53	00:10:42	6.5	00:01:26	2.3	0.2	\$ 2.03	\$ 86.77
CSBKX	23	00:12:11	3.2	00:00:25	10.5	0.2	\$ 2.64	\$ 25.12
CSBJI	3	00:04:17	96.5	00:00:02	80.6	0.1	\$ 1.69	\$ 2.10
CSBJPALL	10	00:05:01	12.5	00:00:19	5.3	0.1	\$ 1.03	\$ 19.21
CSBJS	28	00:08:08	3.5	00:00:33	3.8	0.1	\$ 1.30	\$ 33.75
CSBJV	26	00:04:34	5.6	00:00:18	6.6	0.1	\$ 1.22	\$ 18.19
CSBJX	97	00:11:31	8.5	00:00:40	4.3	0.1	\$ 1.77	\$ 40.27
CSBKA	404	00:17:12	0.4	00:01:02	1.6	0.1	\$ 1.06	\$ 62.82
CSBJG	2	00:00:41	18.2	00:00:02	4.9	0.0	\$ 0.12	\$ 2.38

Batch Analyzer summary view of jobs

SoftBase Systems Batch Analyzer Version 3.1.0

==== Job Summary SQL Performance Analysis ====

Command ==> █ Scroll ==> CSR

Filter: ON Intervals: OFF From: 08/30/09 To: 08/31/09 Loctn: DB8G

Report Summary Level(A/J/S): (J) A - Application (J - Job) S - SQL <-

Jobname	SQL Executed	Unique SQL
DBP1001D	3001781	9
HRP4001W	2287581	6
DBP1002W	510026	13
CSBJS9	26518	118
CSBJS9S	267	156
CSBJS91	4764	2794
CSBJX	3774	13
CSBKM344	10	4
CSBIA	111	66
CSBJA	516	286
CSBIX	3193	266
SBASTPRG	4	4

4

Tue 12 Jan 02:46

Batch Analyzer summary view of jobs

```

SoftBase Systems
Batch Analyzer Version 3.1.0
==== Job Summary SQL Performance Analysis ====
Command ==> █ Scroll ==> CSR
Filter: ON Intervals: OFF From: 08/30/09 To: 08/31/09 Loctn: DB8G
Report Summary Level(A/J/S):(J) A - Application (J - Job) S - SQL <-

      SQL Unique
Jobname Executed SQL
-----
- DBP1001D 3001781 9
- HRP4001W 2287581 6
- DBP1002W 510026 13
- CSBJS9 26518 118
- CSBJS9S 267 156
- CSBJS91 4764 2794
- CSBJX 3774 13
- CSBKM344 10 4
- CSBIA 111 66
- CSBJA 516 286
- CSBIX 3193 266
- SBASTPRG 4 4
  
```

Batch Analyzer summary view of SQL

SoftBase Systems

Batch Analyzer Version 3.1.0

=== SQL Summary Analysis ===

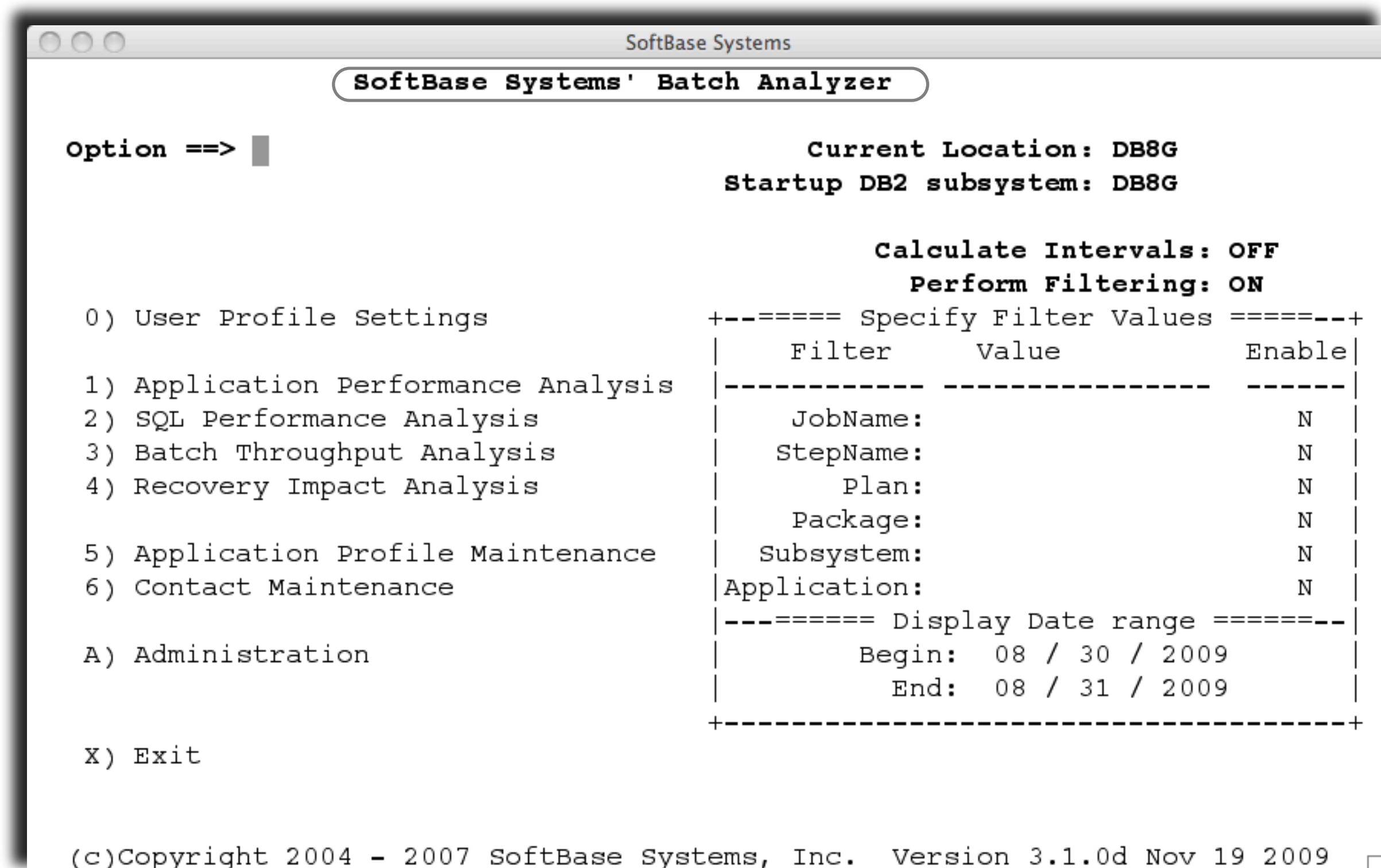
Command ==> █

Filter: ON Intervals: OFF From: 08/01/09 To: 08/31/09 Loctn: DB8G

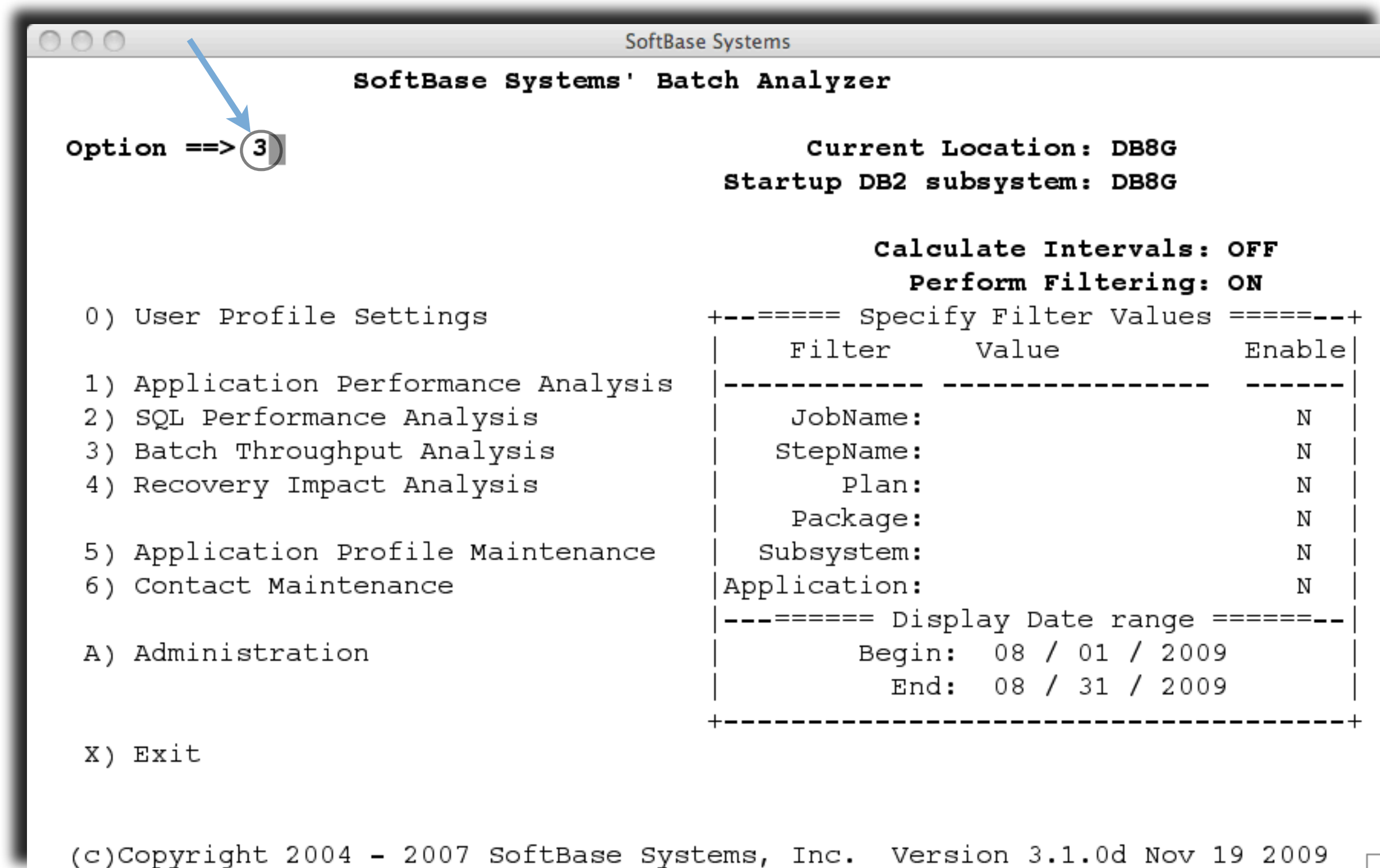
Report Summary Level(A/J/S): S A - Application J - Job S - SQL

Package	Stmt Num	Stmt Type	DB2 CPU %	Total Cost	Elapsed Time	Total CPU	Exec Count
SBTU001	670	UPDAT	92.9	\$ 888.79	00:32:54	00:14:48	408
SBTU001	475	OPEN	1.6	\$ 15.80	00:02:04	00:00:15	12
HR40002	356	OPEN	1.1	\$ 11.29	00:01:04	00:00:11	30
SBTU001	603	INSRT	0.2	\$ 2.63	00:05:23	00:00:02	2010000
R3700000	497	RTNXT	0.2	\$ 2.09	00:00:35	00:00:02	3741
P9600000	308	DYNAM	0.1	\$ 1.69	00:04:08	00:00:01	1012
R3700000	683	PREPR	0.1	\$ 1.41	00:00:12	00:00:01	3793
S3999999	202	UPDAT	0.1	\$ 1.21	00:00:05	00:00:01	8906
S3900430	146	SET	0.1	\$ 1.00	00:00:02	00:00:01	2001
R3714000	548	EXCUT	0.0	\$ 0.82	00:00:12	~ 0:00	855
M3134000	479	DYNAM	0.0	\$ 0.80	00:00:01	~ 0:00	332
S3999996	217	UPDAT	0.0	\$ 0.77	00:00:01	~ 0:00	5765
R3700000	650	CLOSE	0.0	\$ 0.77	00:00:01	~ 0:00	3726
U1000000	1061	OPEN	0.0	\$ 0.77	00:00:02	~ 0:00	1722

Batch Analyzer main dialogue panel



Batch Analyzer main dialogue panel



Batch Analyzer Batch Throughput Analysis

SoftBase Systems

Batch Analyzer Version 3.1.0

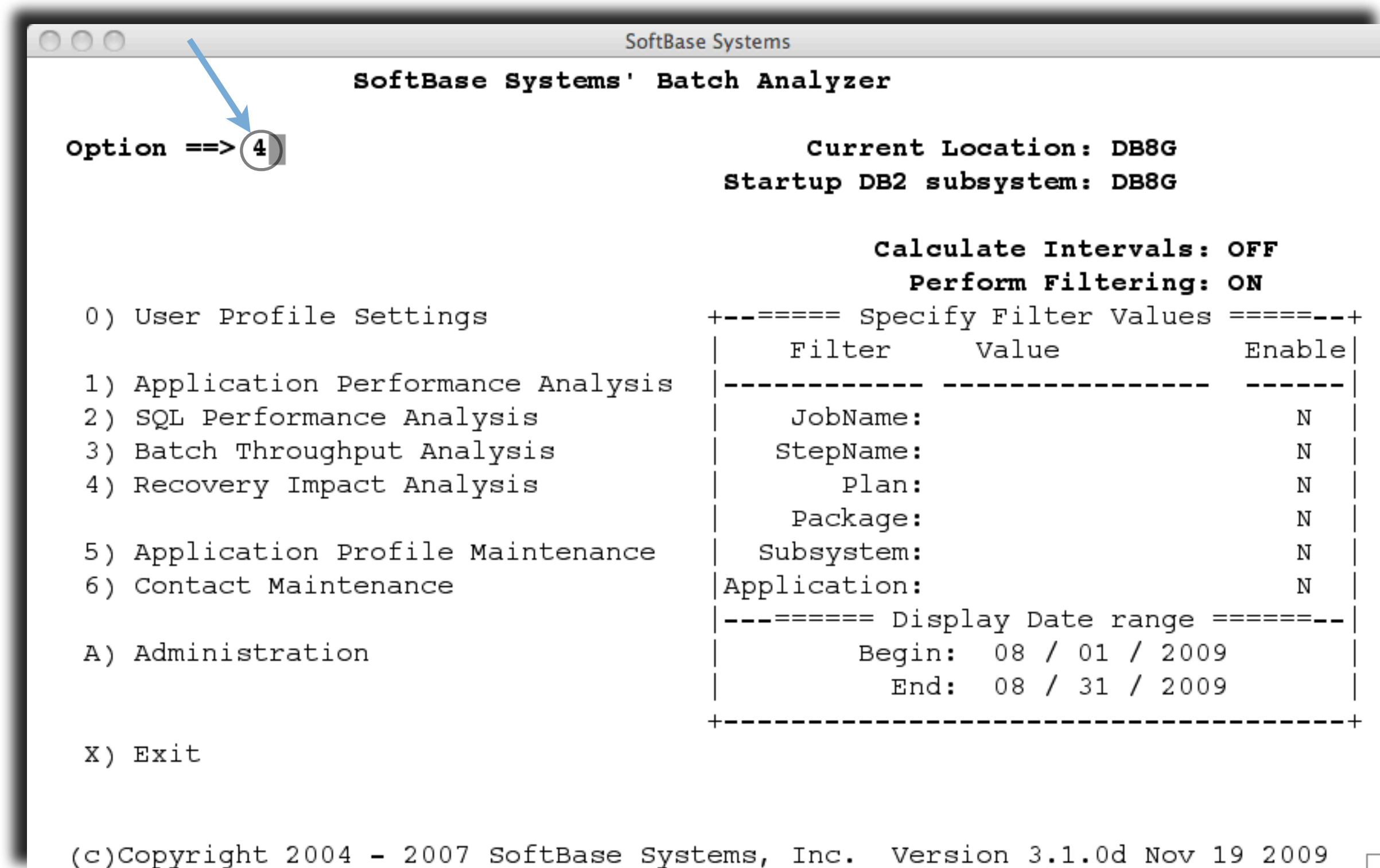
=== Batch Throughput Analysis (Jobs) ===

Command ==> █ Scroll ==> CSR

Filter: ON Intervals: OFF From: 08/01/09 To: 08/31/09 Locn: DB8G

		+--- RUN TIME ---+							
Jobname	Job Start Timestamp	Job Elapsed	DB2 % of Et	DB2 CPU	I	Deadlck Timeout	Comt Cnt	Chg Pct	Commit Freqncy
_ DBP1002W	08/24 20:34	00:17:43	40.7	00:00:17	--	12	4	88.0	00:04:25
_ DBP1002W	08/30 21:34	00:17:26	39.4	00:00:14	--	12	4	91.6	00:04:21
_ DBP1001D	08/24 20:34	00:24:00	90.6	00:09:19	--	1	2	95.1	00:12:00
_ DBP1001D	08/30 21:34	00:17:32	89.1	00:08:59	--	1	2	95.2	00:08:46
_ CSBJA	08/02 17:18	~ 0:00	6.0	~ 0:00	--	0	1	0.2	<1
_ CSBJA	08/02 17:19	00:00:05	0.2	~ 0:00	--	0	4	7.2	00:00:01
_ CSBJA	08/02 17:19	~ 0:00	0.6	~ 0:00	--	0	1	2.9	<1
_ CSBJA	08/02 17:21	00:00:05	0.2	~ 0:00	--	0	4	1.7	00:00:01
_ CSBJA	08/02 17:21	~ 0:00	0.7	~ 0:00	--	0	1	2.6	<1
_ CSBJA	08/02 17:21	00:00:05	0.2	~ 0:00	--	0	4	2.9	00:00:01
_ CSBJA	08/02 17:21	~ 0:00	0.6	~ 0:00	--	0	1	3.2	<1
_ CSBJX	08/02 17:52	00:00:03	55.8	~ 0:00	--	0	6	90.2	<1
_ CSBJA	08/02 17:55	00:00:02	14.3	~ 0:00	--	0	2	98.2	00:00:01
_ CSBJA	08/02 17:55	~ 0:00	0.9	~ 0:00	--	0	1	2.0	<1
_ CSBJX	08/02 17:57	00:00:01	1.4	~ 0:00	--	0	6	22.3	<1

Batch Analyzer main dialogue panel



Batch Analyzer Recovery Impact Analysis

SoftBase Systems

Batch Analyzer Version 3.1.0

==== Recovery Impact Analysis (Jobs) ====

Command ==> █ Scroll ==> CSR

Filter: ON Intervals: OFF From: 08/01/09 To: 08/31/09 Loctn: DB8G

Jobname	Job Start Timestamp	Job Elapsed	DB2 % of Et	Deadlck I Timeout	Chg Pct	Comit Cnt	Commit Frequency	Rollback Estimate
DBP1001D	08/24 20:34	00:24:00	90.6	-- 1	95.1	2	00:12:00	00:41:09
DBP1001D	08/30 21:34	00:17:32	89.1	-- 1	95.2	2	00:08:46	00:29:15
CSBJI	08/27 14:27	00:04:06	98.9	-- 0	0.0	1	00:04:06	00:08:08
DBP1002W	08/24 20:34	00:17:43	40.7	-- 12	88.0	4	00:04:25	00:04:40
DBP1002W	08/30 21:34	00:17:26	39.4	-- 12	91.6	4	00:04:21	00:04:39
CSBBBA2	08/27 16:50	00:00:38	66.3	-- 0	0.0	2	00:00:19	00:00:50
CSBBSL	08/26 11:48	00:00:32	68.7	-- 0	0.0	0	NO CMT	00:00:44
CSBIX	08/10 14:51	00:00:27	47.1	-- 0	0.1	38	<1	00:00:25
CSBJI	08/27 14:35	00:00:07	69.1	-- 0	0.0	1	00:00:07	00:00:10
CSBIX	08/10 14:22	00:00:17	62.9	-- 0	0.1	19	<1	00:00:09
SBASTPRG	08/16 14:19	00:00:06	79.3	-- 0	0.0	0	NO CMT	00:00:09
CSBJF	08/19 13:20	00:00:15	30.5	-- 0	0.1	4	00:00:03	00:00:09
SBASTPRG	08/02 15:00	00:00:07	70.4	-- 0	0.0	0	NO CMT	00:00:09
SBASTPRG	08/30 15:19	00:00:06	79.9	-- 0	0.0	0	NO CMT	00:00:09
CSBJX	08/03 12:29	00:00:49	13.3	-- 0	65.4	6	00:00:08	00:00:07

Batch Analyzer Integration

SoftBase Systems Batch Analyzer Version 3.2.0 Contention Occurred

=== SQL Performance Analysis (Jobs) ===

Command ==> █ Scroll ==> CSR

Filter: ON Intervals: ON From: 10/01/09 To: 12/31/09 Locn: DB8G ->

Jobname	Job Start		RUN TIME		CPU UTILIZED		I	DB2 CPU%	Total
	Timestamp	Job Elapsed	DB2 % of Et	Job CPU	DB2 % of CPU	all Jobs			
_ SBASTPRG	11/04	01:01	00:00:01	0.2	~ 0:00	4.6	3	100.0	\$ 0.01
_ SBASTPRG	11/14	01:01	00:00:02	0.0	~ 0:00	5.0	9	100.0	\$ 0.01
_ SBASTPRG	11/15	01:01	00:00:01	0.1	~ 0:00	6.5	10	100.0	\$ 0.01
_ SBASTPRG	11/17	01:01	00:00:01	0.1	~ 0:00	7.0	12	100.0	\$ 0.01
_ SBASTPRG	11/21	01:01	00:00:01	5.1	~ 0:00	6.3	16	100.0	\$ 0.01
_ CSB4X	11/30	10:09	00:00:01	26.9	~ 0:00	3.5	17	100.0	\$ 0.01
_ CSB4X	12/14	15:01	00:00:02	0.6	~ 0:00	3.6	19	100.0	\$ 0.01
_ CSB4X	12/17	10:34	00:00:01	1.5	~ 0:00	12.5	22	87.7	\$ 0.01
_ CSB4X	12/01	12:40	00:00:17	95.2	~ 0:00	37.3	18	85.9	\$ 0.04
_ CSB4P2 *	11/06	14:54	00:00:29	32.8	~ 0:00	4.3	5	61.9	\$ 0.01
_ CSB4BIND	11/05	06:53	00:00:04	1.0	~ 0:00	0.6	4	43.5	\$ 0.01
_ CSB4P1 *	11/06	14:54	00:00:29	52.9	~ 0:00	2.6	5	38.0	\$ 0.01
_ CSB4BIND	11/11	14:35	00:00:02	0.7	~ 0:00	0.6	6	33.3	\$ 0.01
_ CSB4BIND	11/02	12:41	00:01:29	1.2	~ 0:00	0.7	1	32.5	\$ 0.01
_ CSB4BIND	11/05	07:12	00:00:01	0.2	~ 0:00	0.5	4	32.2	\$ 0.01

Batch Analyzer Integration

```
SoftBase Systems
Batch Analyzer Version 3.2.0
=== SQL Job Errors ===
Command ==> █ Scroll ==> CSR
Filter: ON Intervals: ON From: 10/01/09 To: 12/31/09 Loctn: DB8G
->

Contention type/      Job      Resource type/
Originator Jobname  Number  Plan    Resource name
-----
+-----+-----+-----+-----+-----+
- | Deadlock in: CSB4P2  JOB06730 DO911P2 | Tablespace Page |
  | Caused by: CSB4P1  JOB06729 DO911P1 | DSNDB04 .T1     | .X'000002'     |
+-----+-----+-----+-----+-----+

Thu 14 Jan 10:57
```

Batch Analyzer Integration

JOBNAME	TYPE	ERROR TIME	MESSAGE	----- PLAN	CONTENTION WITH JOBNAME	----- TYPE	----- PLAN	REASON	RESOURCE	----- TYPE	----- NAME
HRDAILY	BATCH	2010-06-17-14.11.48	DSNT501I					DEADLOCK	TABLESPACE	PAGE	
DGFDB008	DGFTS081	.X'00									
HRDAILY	BATCH	2010-06-17-14.11.48	DSNT375I	HRDAILY	HRMNTHLY	BATCH	HRMNTHLY				
HRDAILY	BATCH	2010-06-17-14.55.49	DSNT501I					STOPPED	DATABASE	DGFDB008	
CSB4BIND	BATCH	2010-06-18-11.49.06	DSNT376I	DSNBIND	CSB4	DB2CALL	CSB4S320				
HRSTOPPD	BATCH	2010-06-21-11.53.27	DSNT501I					STOPPED	DATABASE	DGFDB008	
HRSTOPP2	BATCH	2010-06-21-14.11.13	DSNT501I					STOPPED	DATABASE	DGFDB008	

Batch Analyzer

- Job-centric view of DB2 usage
- Extremely lightweight
- Easy install
- No DB2 traces used
- No JCL changes
- Easy to Use

Variable Commit Frequency

- Dynamically Varies Commit Frequency
- Based on Time or Frequency
- Executes via JCL or Operator command
- Can Save Significant CPU & Elapsed Time
- Without Source Code Changes

Attach

SQL Monitoring

PROGRAM	JOB STEP PROGRAM	SQL PLAN	SQL CODE	CPU TIME	CPU PCT	DURATION	SQL TYPE	NO. ROWS AFFECTED	STATEMENT NUMBER	START TIME	START DATE
HR40001	HR40001	HR40001	+000	.0003	100.00	.0003	SELECT		2601	15:25:07.75	10/173
HR40001	HR40001	HR40001	+000	.0000	.00	.0001	SELECT		2601	15:25:07.75	10/173
HR40001	HR40001	HR40001	+000	.0000	.00	.0001	SELECT		2601	15:25:07.75	10/173
HR40001	HR40001	HR40001	+100	.0000	.00	.0001	SELECT		2601	15:25:07.75	10/173
HR40001	HR40001	HR40001	+100	.0000	.00	.0001	SELECT		2601	15:25:07.75	10/173
HR40001	HR40001	HR40001	+100	.0000	.00	.0001	SELECT		2601	15:25:07.75	10/173
HR40001	HR40001	HR40001	+100	.0000	.00	.0001	SELECT		2601	15:25:07.75	10/173
HR40001	HR40001	HR40001	+100	.0000	.00	.0001	SELECT		2601	15:25:07.75	10/173
HR40001	HR40001	HR40001	+100	.0000	.00	.0001	SELECT		2601	15:25:07.75	10/173
HR40001	HR40001	HR40001	+100	.0000	.00	.0001	SELECT		2601	15:25:07.75	10/173
HR40001	HR40001	HR40001	+000	.0000	.00	.0001	SELECT		2601	15:25:07.75	10/173
HR40001	HR40001	HR40001	+000	.0000	.00	.0001	SELECT		2601	15:25:07.75	10/173
HR40001	HR40001	HR40001	+000	.0003	60.00	.0005	OPEN		2477	15:25:07.75	10/173
HR40001	HR40001	HR40001	+100	.0000	.00	.0001	FETCH		2524	15:25:07.76	10/173
HR40001	HR40001	HR40001	+000	.0000	.00	.0001	CLOSE		2564	15:25:07.76	10/173
HR40001	HR40001	HR40001	+000	.0000	.00	.0001	OPEN		2357	15:25:07.76	10/173
HR40001	HR40001	HR40001	+000	.0000	.00	.0001	FETCH		2404	15:25:07.76	10/173
HR40001	HR40001	HR40001	+000	.0002	66.66	.0003	OPEN		2652	15:25:07.76	10/173
HR40001	HR40001	HR40001	+000	.0000	.00	.0001	FETCH		2707	15:25:07.76	10/173
HR40001	HR40001	HR40001	+000	.0000	.00	.0001	FETCH		2707	15:25:07.76	10/173

Attach

ENQ Serialization

(US Patent 5,369,704)

- Acts as traffic cop - controlling table access
- Prevents ABENDS due to -911 or -904
- Can be used with image copy
- Allows multi-threading of DB2 batch jobs

Attach

Batch Healthcare

- DeadLock Advisor
- Batch Analyzer
- Attach
- Checkpoint

SoftBase ***Batch HealthCare***

SoftBase Systems, Inc.
softbase.com

SoftBase